

**ECOREGION**      **Faroe Plateau ecosystem**  
**STOCK**            **Cod in Subdivision Vb<sub>2</sub> (Faroe Bank)**

**Advice for 2014**

New data on landings and indices from the two annual Faroese surveys (2012 summer, 2013 spring) do not change the perception of the stock since 2008 and do not give reason to change the advice from 2011. The advice for the fishery in 2014 is therefore the same as the advice given since 2008: “*Because of the very low stock size ICES advises that the fishery should be closed. Reopening the fishery should not be considered until both survey indices indicate a biomass at or above the average of the period 1996–2002*”.

*Management considerations*

The Faroe Bank has been closed to fishing since 1 January 2009. However, in the fishing years 2010–2011 and 2011–2012, respectively, a total of 78 and 100 fishing days were allowed to small jiggers in the shallow waters of the Bank. The closure advice should apply to all fisheries.

**Sources**

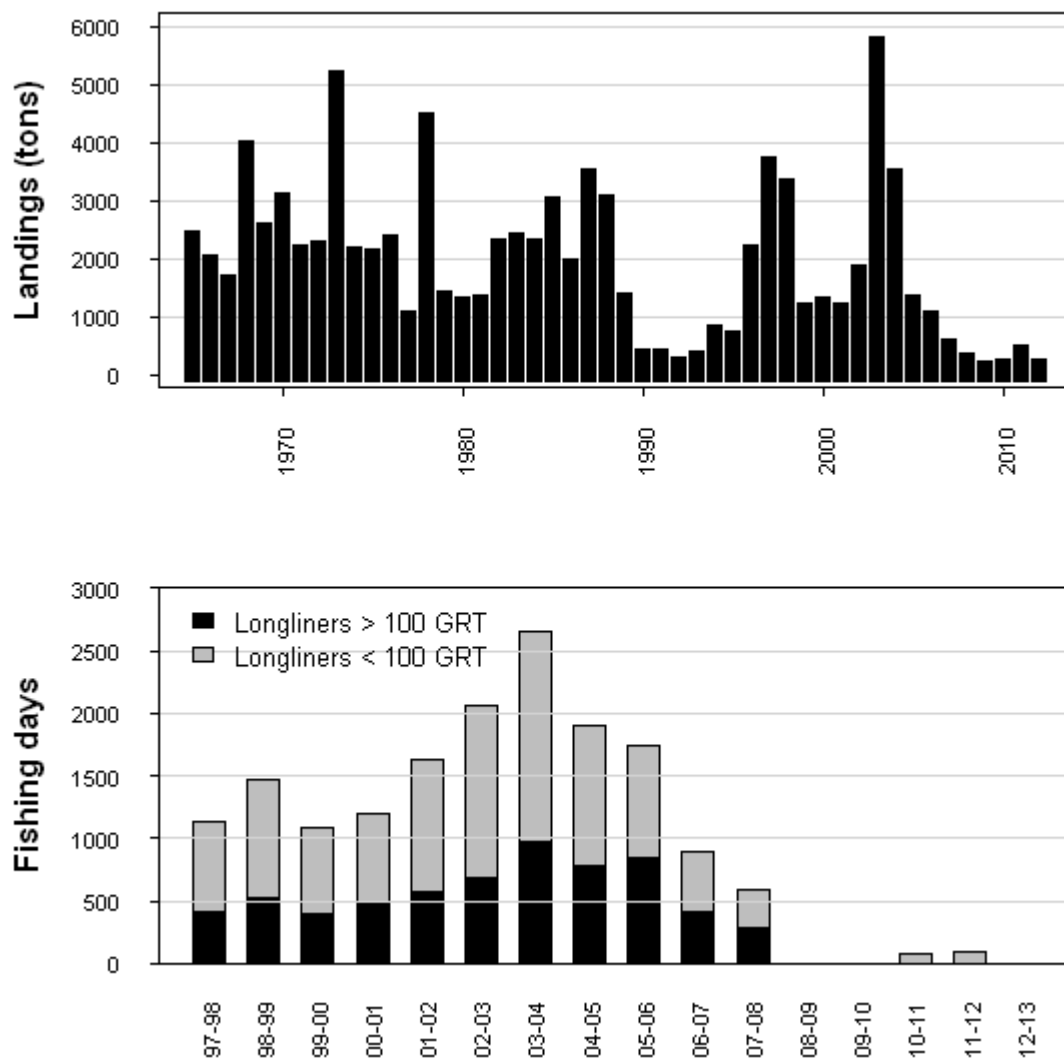
ICES. 2013. Report of the North-Western Working Group, 25 April–2 May 2013. ICES CM 2013/ACOM:07.

**Table 4.4.2.1** Cod in Subdivision Vb<sub>2</sub> (Faroe Bank). ICES advice, management, and landings.

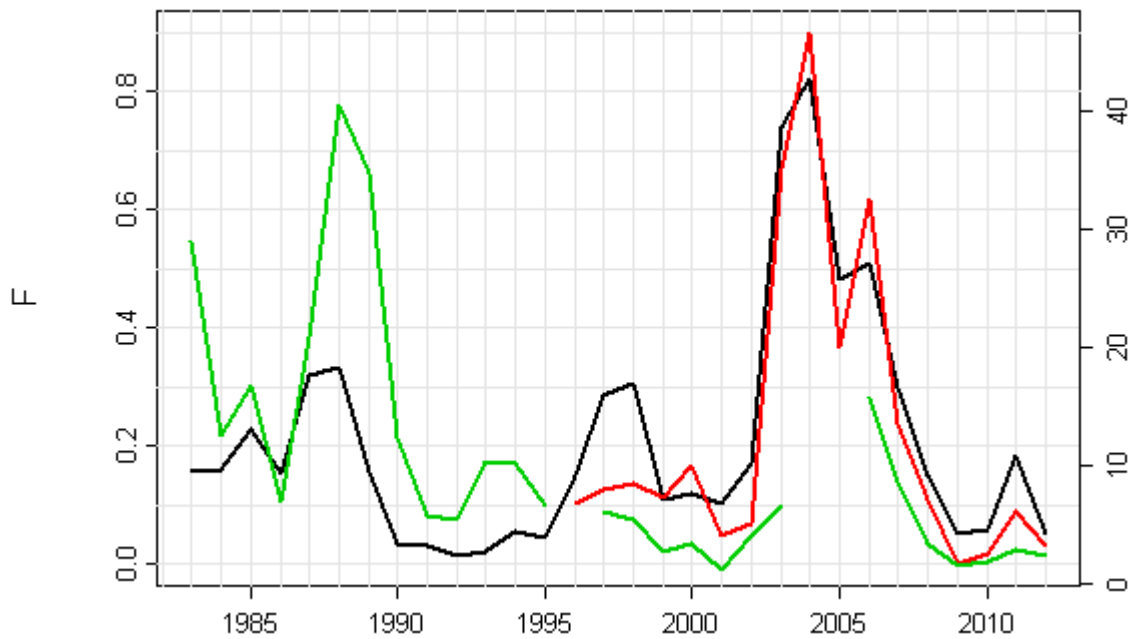
Year	ICES Advice	Predicted catch corresp. to advice	Agreed TAC	Official landings
1987	No assessment	-		3.5
1988	No assessment	-		3.1
1989	Addition to Faroe Plateau TAC	~2.0		1.4
1990	Access limitation may be required	-		0.6
1991	Access limitation may be required	-		0.4
1992	No fishing	0.3		0.3
1993	TAC	0.5		0.4
1994	TAC	0.5		1.0
1995	Precautionary TAC	0.5		1.2
1996	Precautionary TAC	0.5	1.0	2.5
1997	Effort at present levels	0.7	Not applicable	3.9
1998	Effort at present levels	-		3.5
1999	Effort not to exceed that exerted in 1996–1997	-		1.3
2000	Effort not to exceed that of 1996–1998	-		1.2 <sup>1)</sup>
2001	Effort not to exceed that of 1996–1999	-		1.8 <sup>1)</sup>
2002	Effort not to exceed that of 1996–2000	-		1.9 <sup>1)</sup>
2003	Effort not to exceed that of 1996–2001	-		5.7 <sup>1)</sup>
2004	Effort not to exceed that of 1996–2002	-		4.3 <sup>1)</sup>
2005	Effort not to exceed that of 1996–2002	-		1.0 <sup>1)</sup>
2006	Effort not to exceed that of 1996–2002	-		0.95 <sup>1)</sup>
2007	Effort not to exceed that of 1996–2002	-		0.45 <sup>1)</sup>
2008	No fishing	0		0.22 <sup>1)</sup>
2009	No fishing	0		0.08 <sup>1)</sup>
2010	Same advice as last year	0		0.1 <sup>1)</sup>
2011	Same advice as last year	0		0.36 <sup>1)</sup>
2012	Same advice as last year	0		0.11 <sup>1)</sup>
2013	Same advice as last year	0		
2014	Same advice as last year	0		

Weights in thousand tonnes.

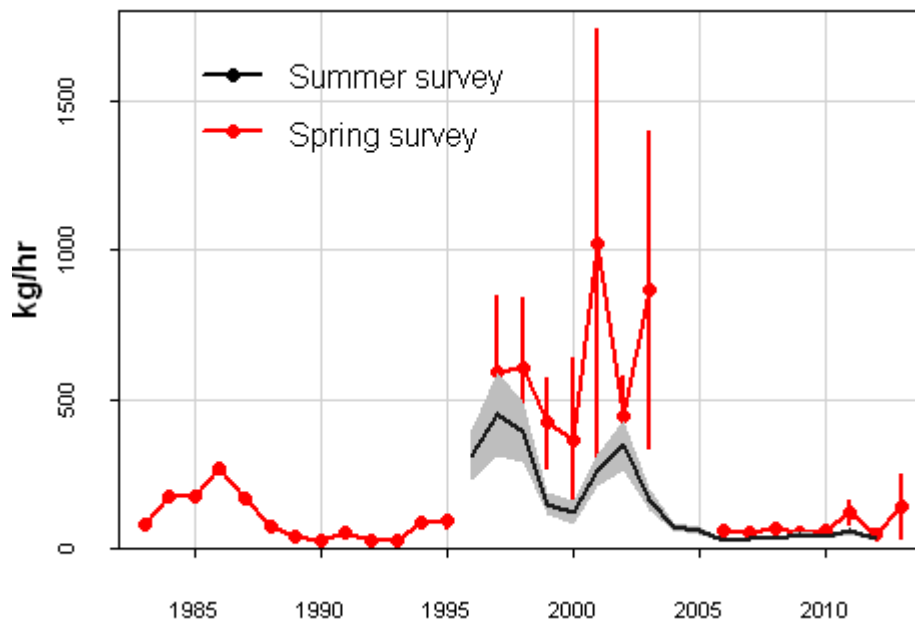
<sup>1)</sup> Working group estimates.



**Figure 4.4.2.1** Cod in Subdivision Vb<sub>2</sub> (Faroe Bank). Top panel: Reported landings 1965–2012. Since 1992 only catches from Faroese and Norwegian vessels are considered to be taken on the Faroe Bank. Bottom panel: Fishing days 1997–2013 for longline gear types on the Faroe Bank.



**Figure 4.4.2.2** Cod in Subdivision Vb<sub>2</sub> (Faroe Bank). Estimated fishing mortality from the production model (black line) and exploitation ratio (ratio of landings to survey interpreted as an index of exploitation rate). Red = summer survey, Green = spring survey.



**Figure 4.4.2.3** Cod in Subdivision Vb<sub>2</sub> (Faroe Bank). Catch per unit of effort in the spring and summer groundfish survey. Vertical bars and shaded areas show the standard error in the estimation of indices.

**Table 4.4.2.2** Cod in Subdivision Vb<sub>2</sub> (Faroe Bank). Nominal catches (tonnes) by country 1986–2012 as officially reported to ICES. From 1992 catches by the Faroe Islands and Norway are used in the assessment.

	1986	1987	1988	1989	1990	1991	1992	1993	1994	1995	1996	1997	1998	
Faroe Islands	1836	3409	2966	1270	289	297	122	264	717	561	2051	3459	3092	
Norway	6	23	94	128	72	38	32	2	8	40	55	135	147	
UK (E/W/Nl)	-	-	-	-	2 <sup>2</sup>	1 <sup>2</sup>	74 <sup>2</sup>	186 <sup>2</sup>	56 <sup>2</sup>	43 <sup>2</sup>	126 <sup>3</sup>	61 <sup>3</sup>	27 <sup>3</sup>	
UK (Scotland)	63 <sup>3</sup>	47 <sup>3</sup>	37 <sup>3</sup>	14 <sup>3</sup>	205 <sup>3</sup>	90 <sup>3</sup>	176 <sup>3</sup>	118 <sup>3</sup>	227 <sup>3</sup>	551 <sup>3</sup>	382 <sup>3</sup>	277 <sup>3</sup>	265 <sup>3</sup>	
<b>Total</b>	<b>1905</b>	<b>3479</b>	<b>3097</b>	<b>1412</b>	<b>568</b>	<b>426</b>	<b>404</b>	<b>570</b>	<b>1008</b>	<b>1195</b>	<b>2614</b>	<b>3932</b>	<b>3531</b>	
<b>Used in assessment</b>					<b>289</b>	<b>297</b>	<b>154</b>	<b>266</b>	<b>725</b>	<b>601</b>	<b>2106</b>	<b>3594</b>	<b>3239</b>	
	1999	2000	2001	2002	2003	2004	2005	2006	2007	2008	2009	2010	2011	2012
Faroe Islands	1001		1094	1840	5957	3607	1270	1005	471	231	81	111	381	114
Norway	88	49	51	25	72	18	37	10	7	1	4	1		
Greenland	-	-	-	-	-	-	-	-	-	-	-	-		
UK (E/W/Nl)	51 <sup>3</sup>	18 <sup>3</sup>	50 <sup>3</sup>	42 <sup>3</sup>	15 <sup>3</sup>	15 <sup>3</sup>	24 <sup>3</sup>	1 <sup>3</sup>						
UK (Scotland)	210 <sup>3</sup>	245 <sup>3</sup>	288 <sup>3</sup>	218 <sup>3</sup>	254 <sup>3</sup>	244 <sup>3</sup>	1129 <sup>3</sup>	278 <sup>3</sup>	53	32	38	54		
<b>Total</b>	<b>1350</b>	<b>312</b>	<b>1483</b>	<b>2125</b>	<b>6298</b>	<b>3884</b>	<b>2460</b>	<b>1294</b>	<b>531</b>	<b>264</b>	<b>123</b>	<b>166</b>	<b>381</b>	<b>114</b>
Correction of Faroese catches in Vb2			-65	-109	-353	-214	-75	-60	-28	-14	-5	-7	-23	-7
<b>Used in assessment</b>	<b>1089</b>	<b>1194</b>	<b>1080</b>	<b>1756</b>	<b>5676</b>	<b>3411</b>	<b>1232</b>	<b>955</b>	<b>450</b>	<b>218</b>	<b>80</b>	<b>105</b>	<b>358</b>	<b>107</b>
* Preliminary														
<sup>1</sup> Includes Vb1.														
<sup>2</sup> Included in Vb1.														
<sup>3</sup> Reported as Vb.														