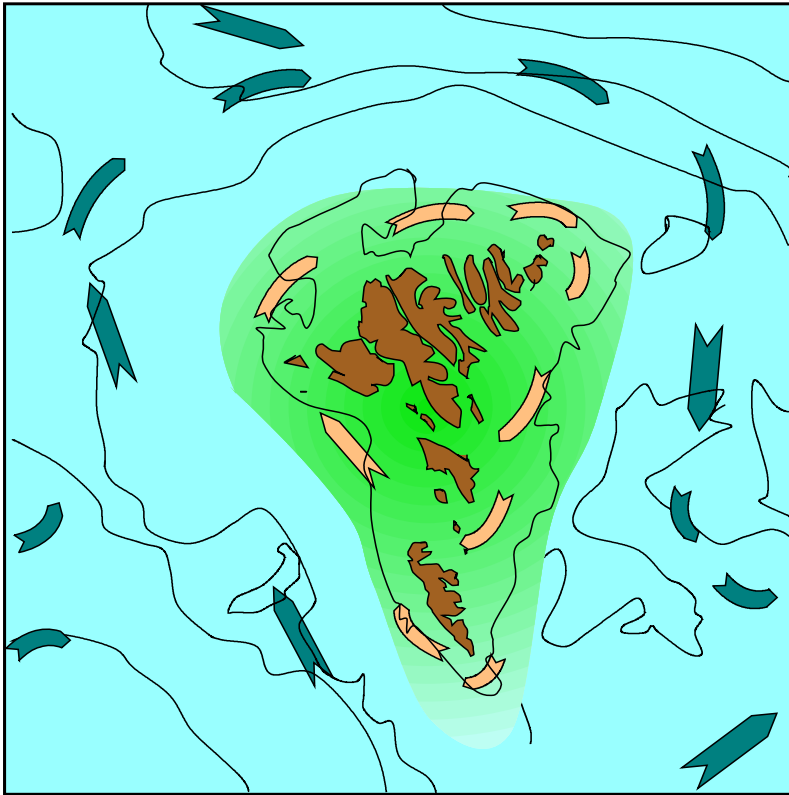




Æti og yngul á Landgrunninum

**Eilif Gaard
Havstovan**

Vistskipanin á Landgrunninum



- Sjógvurin á Landgrunninum er skildur rættiliga væl frá opna havinum uttanfyri
- Serskild vistskipan

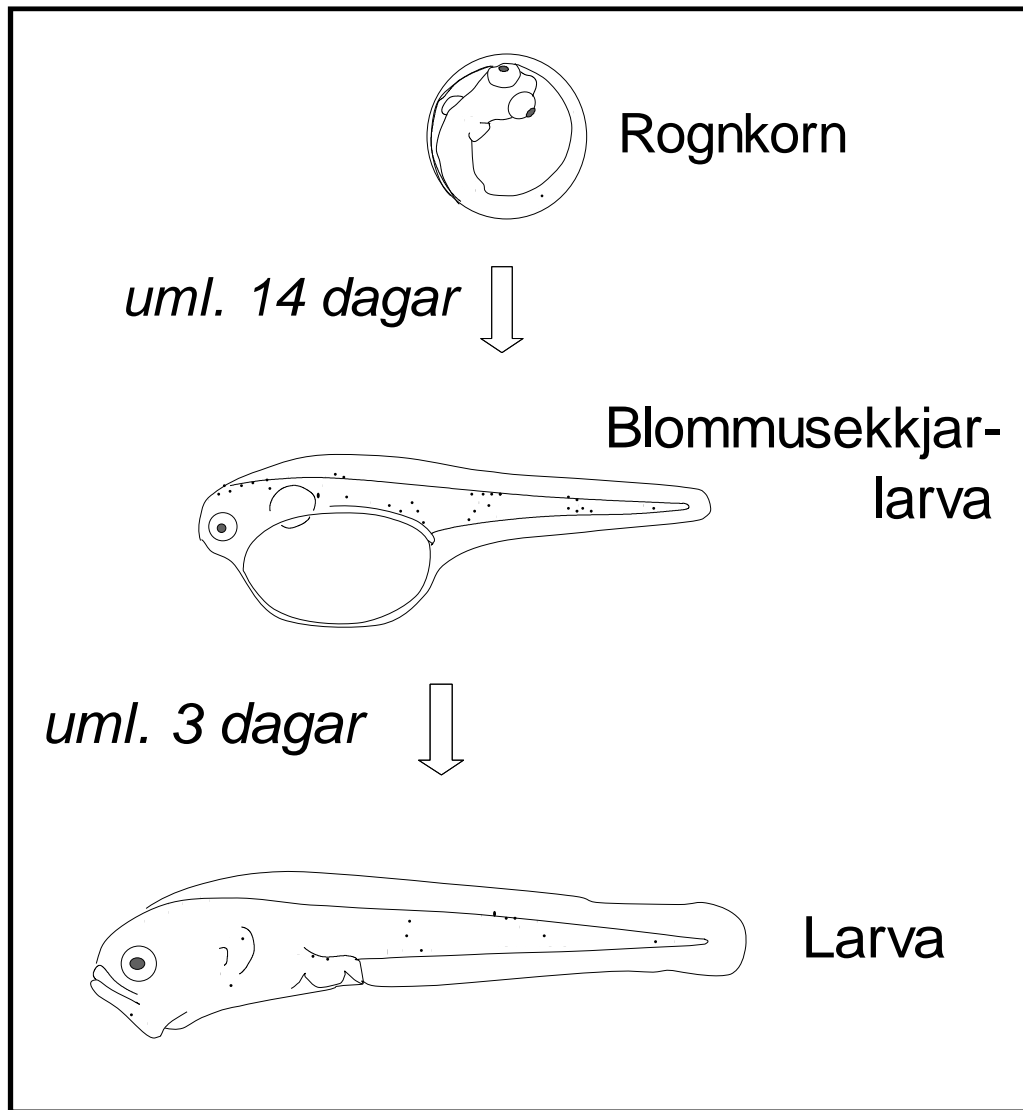
Ójævn tilgongd til ójavnar fiskanægdir

- **Tilgongd** (nýggir árgangir)

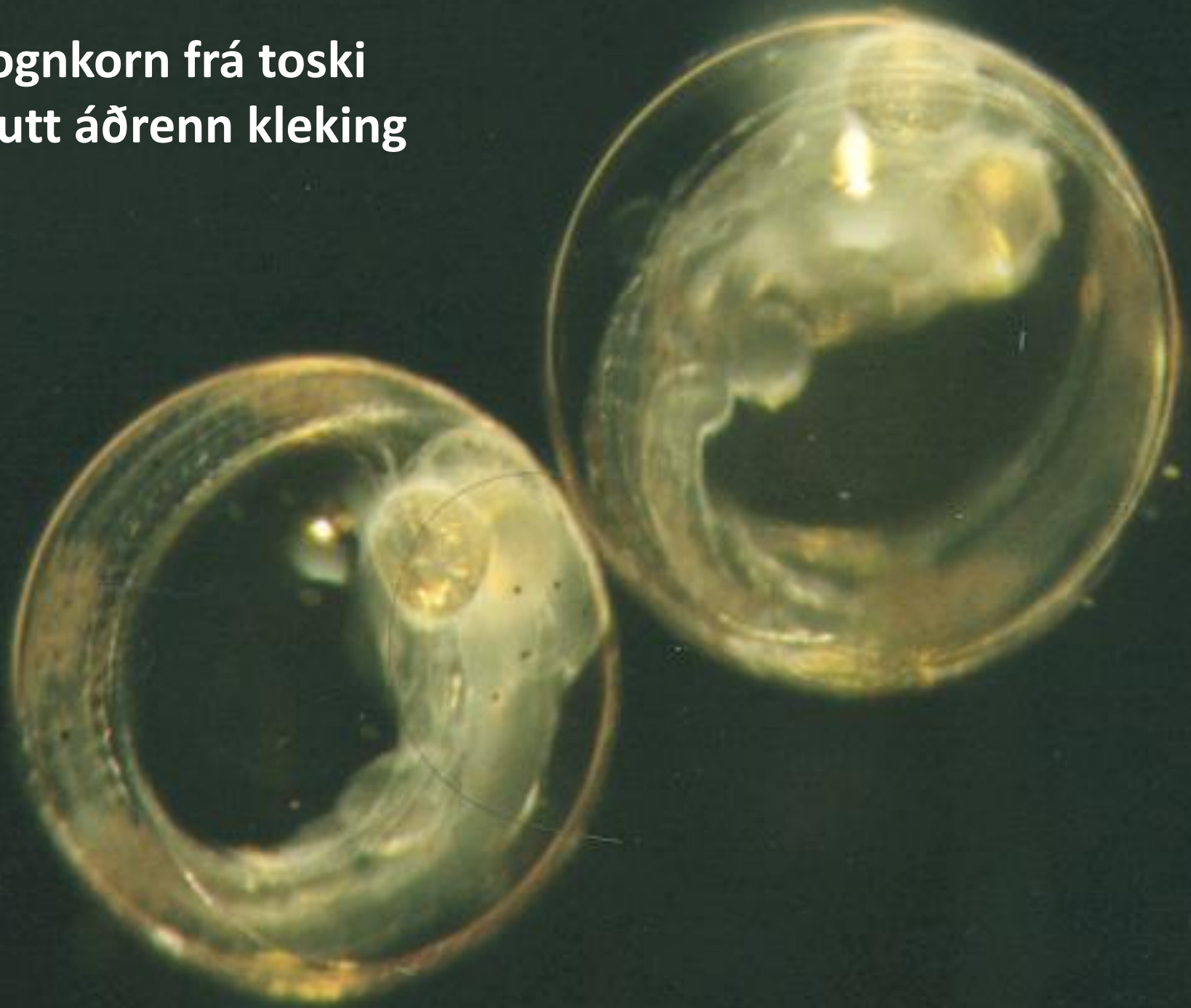
Sera ójævn:

- Toskur: ~ 3 - 45 milliónir (av 2 ára gomlum)
- Hýsa: ~ 2 - 100 milliónir (av 2 ára gomlum)

Rognkorn → fiskalarvur



Rognkorn frá toski
stutt áðrenn kleking



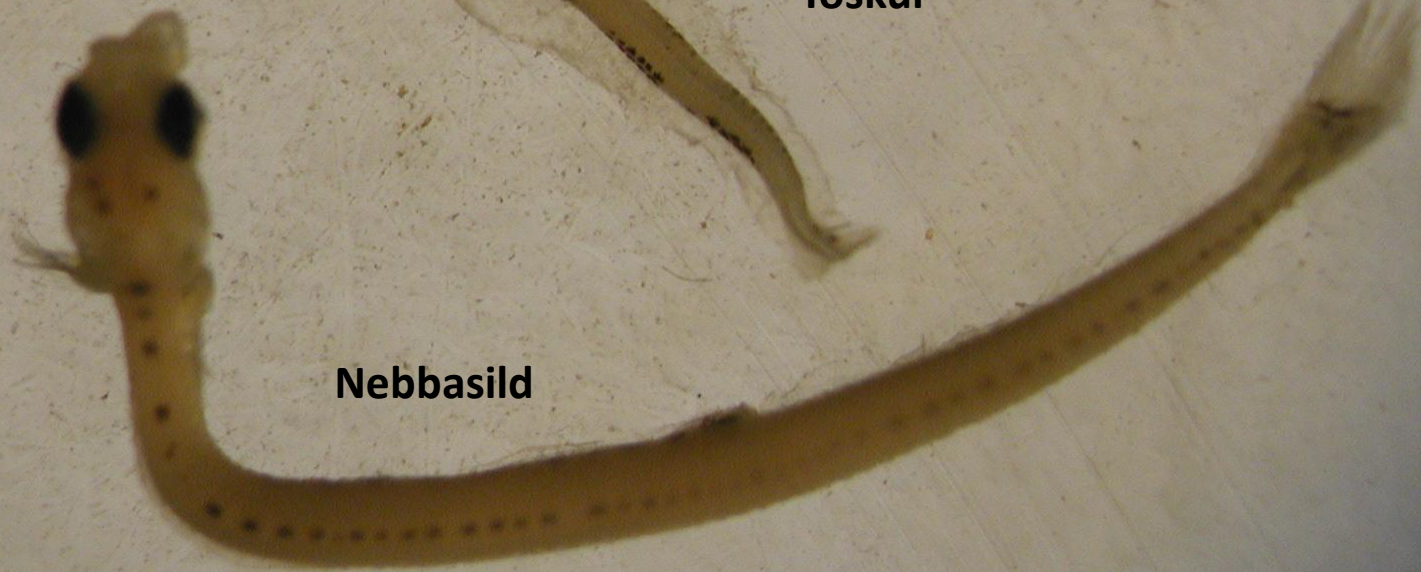
**Fiskalarvur,
fáar dagar gamlar**



Hvítingsbróðir



Toskur



Nebbasild



Toskalarva

Ungar hjá reyðæti

Egg undan reyðæti

Nebbasilda-
larva

Reyðæti frá
Í fjør

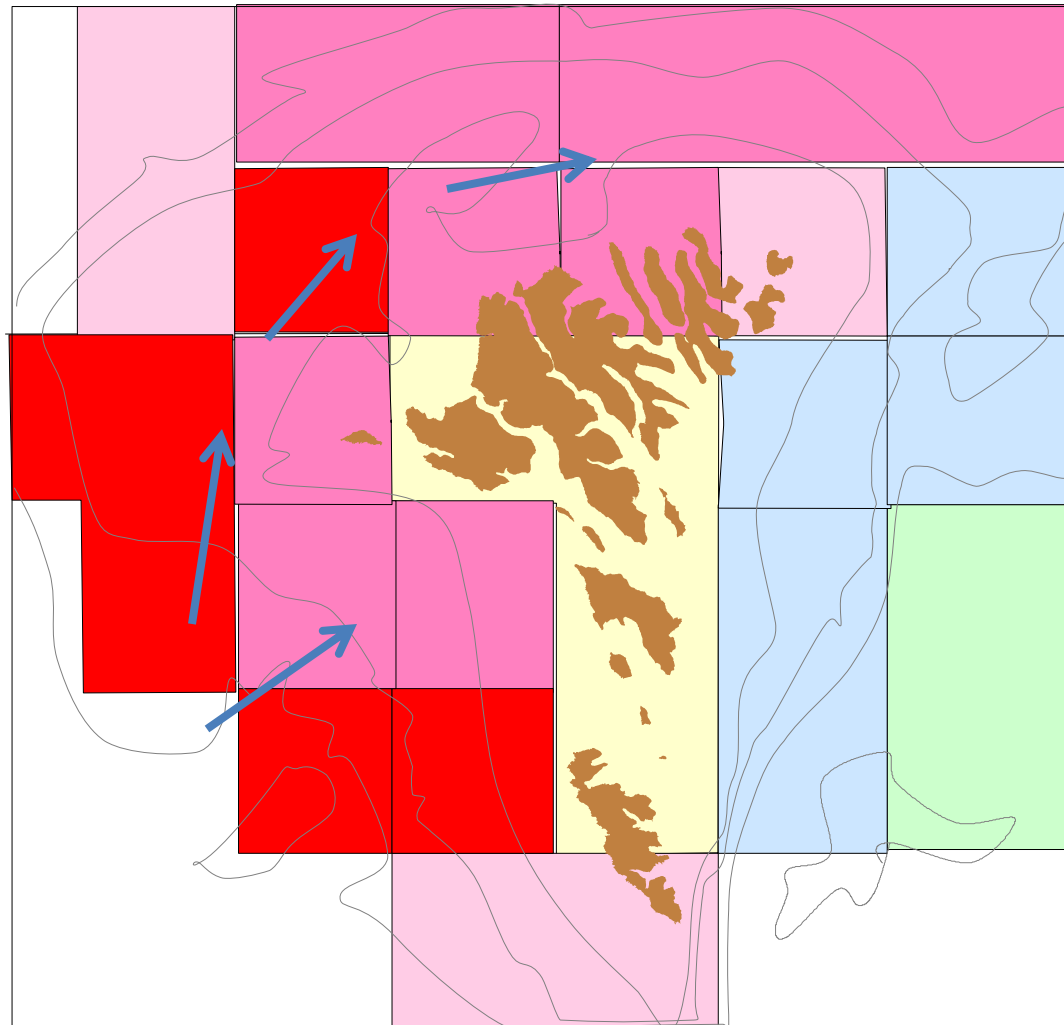
Strategiir fyri at økja um yvirlivilsí hjá fiskalarvum í skiftandi umhvørvi

- Spjaða gýtingina yvir tíð
- Spjaða gýtingina yvir støð
- Eldri fiskur hevur betur rognkvalitet, fleiri rognkorn og gýtir yvir longri tíð enn yngri fiskur

Tað samlaða yvirlivilsíð er meira tengt at umhvørvisviðurskiftum, tá gýtingarstovnarnir eru smáir enn tá teir eru størri

Gýting hjá reyðæti

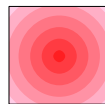
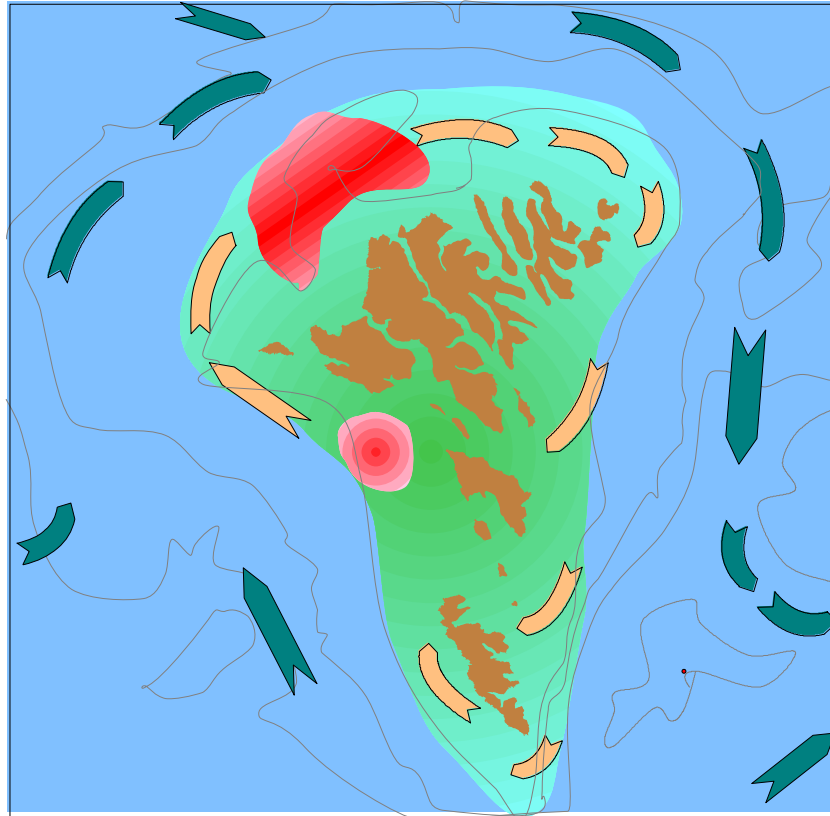
Seint í apríl



Eggs/m³ /day

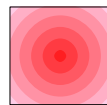
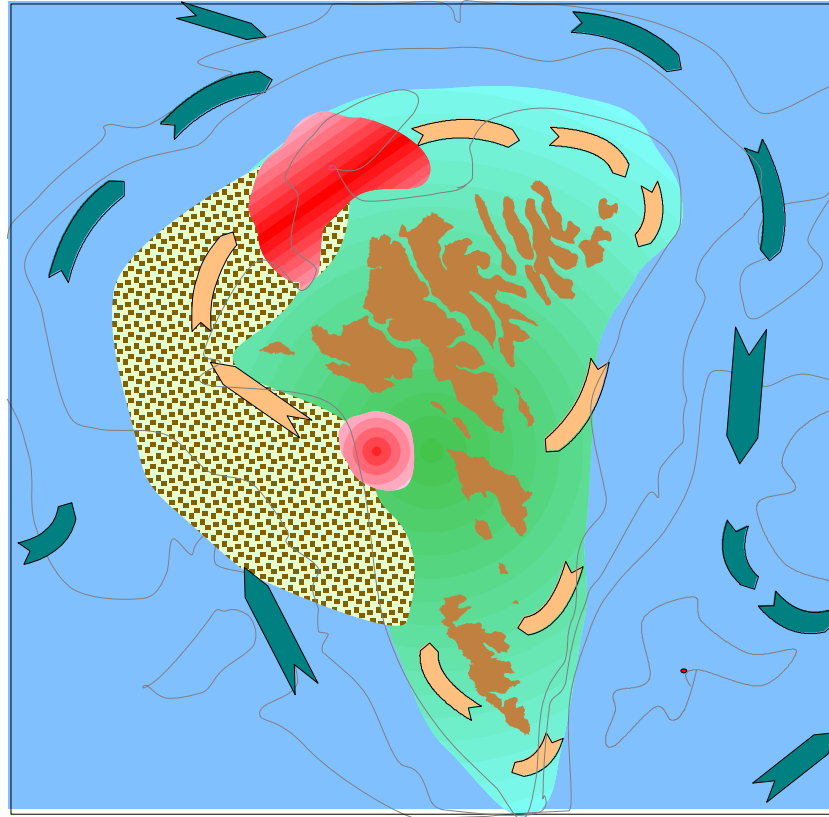


Gýtingarøki hjá toski

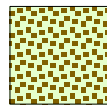


Main cod spawning grounds

Gýtingarøki hjá toski vs. øki við vanliga hægstu gýting hjá reyðæti í apríl

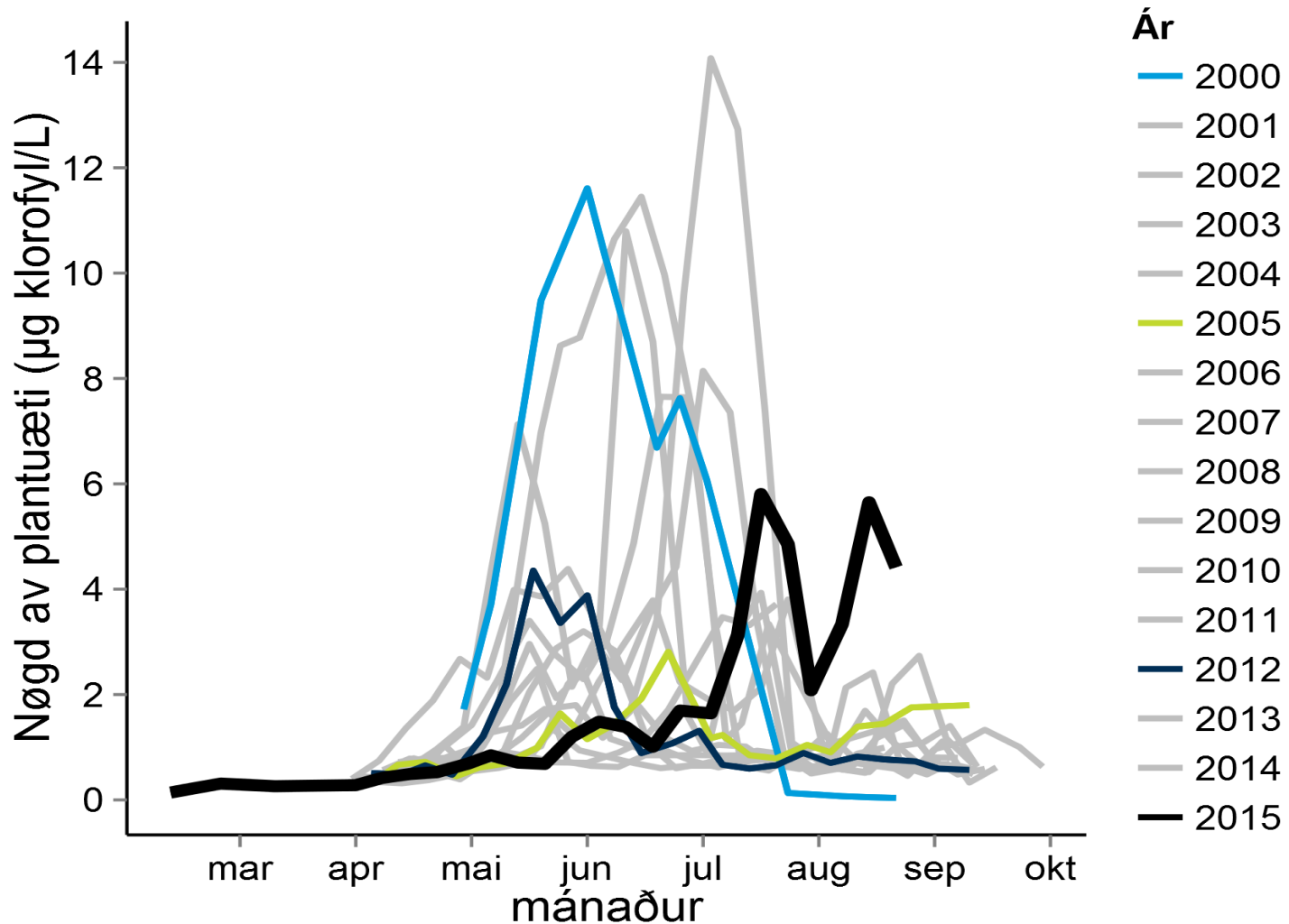


Main cod spawning grounds

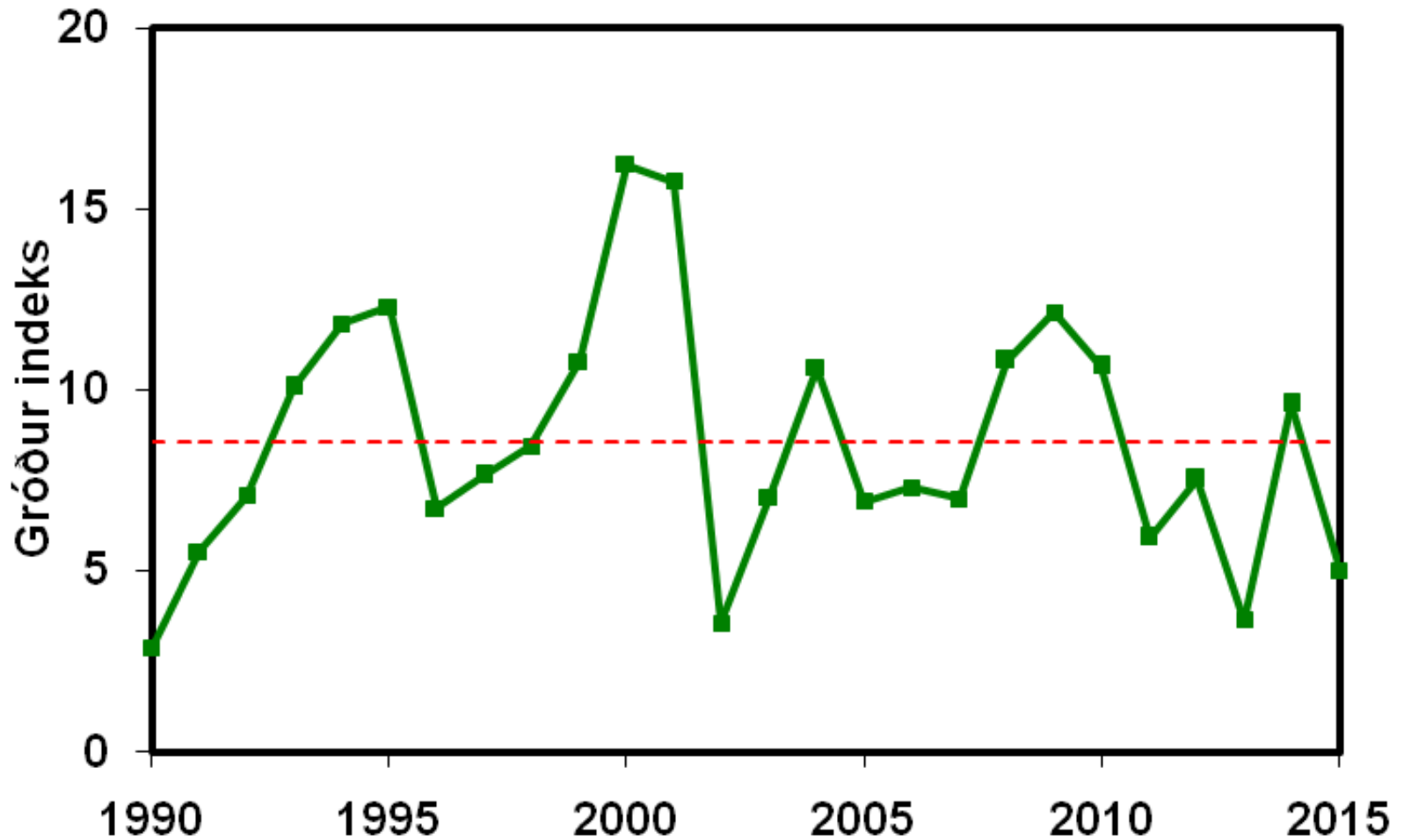


Highest *Calanus* egg production

Plantuæti á Landgrunnum, 2000-2015

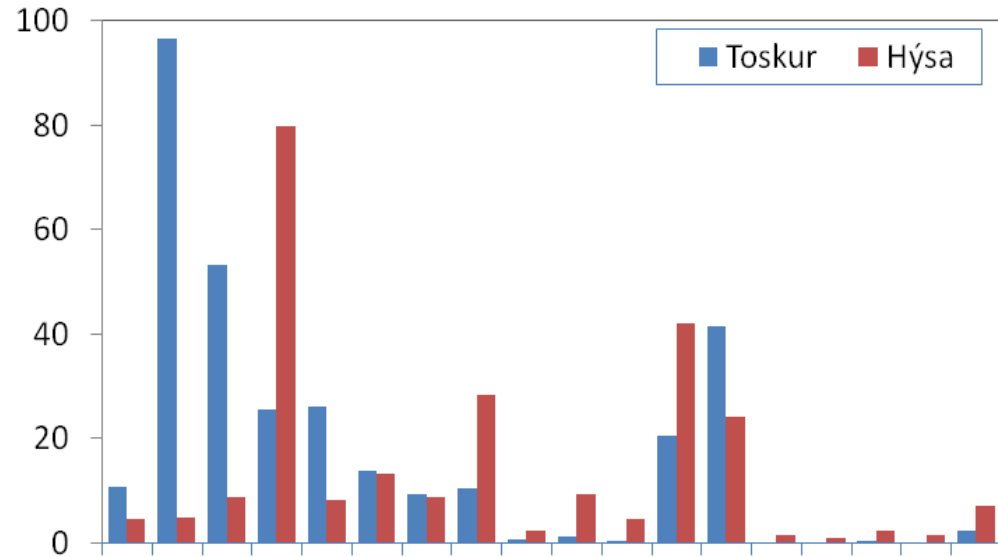


Gróður á Landgrunnum, 1990-2015

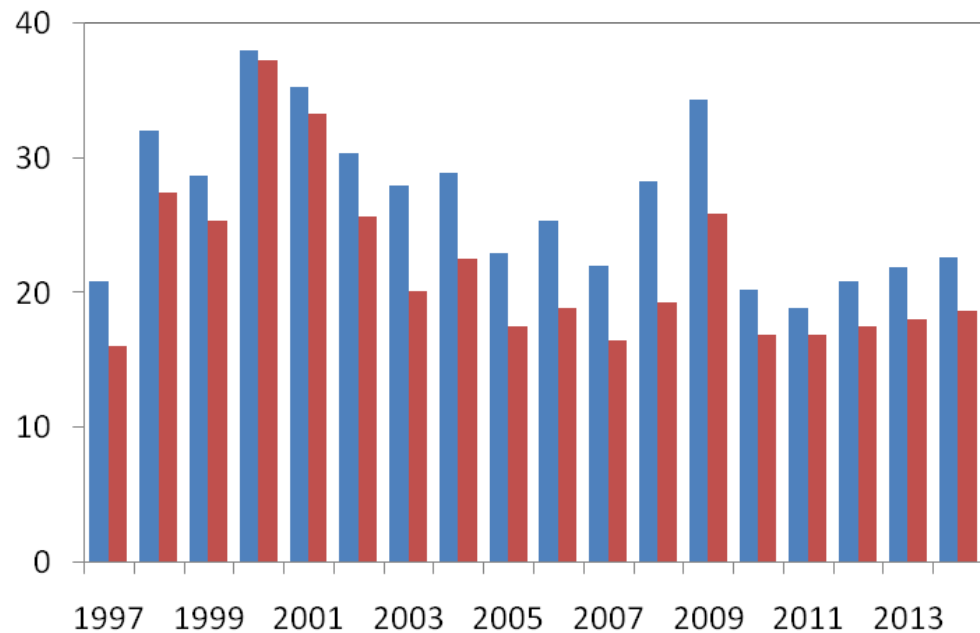


Yngul

Tal (indeks)

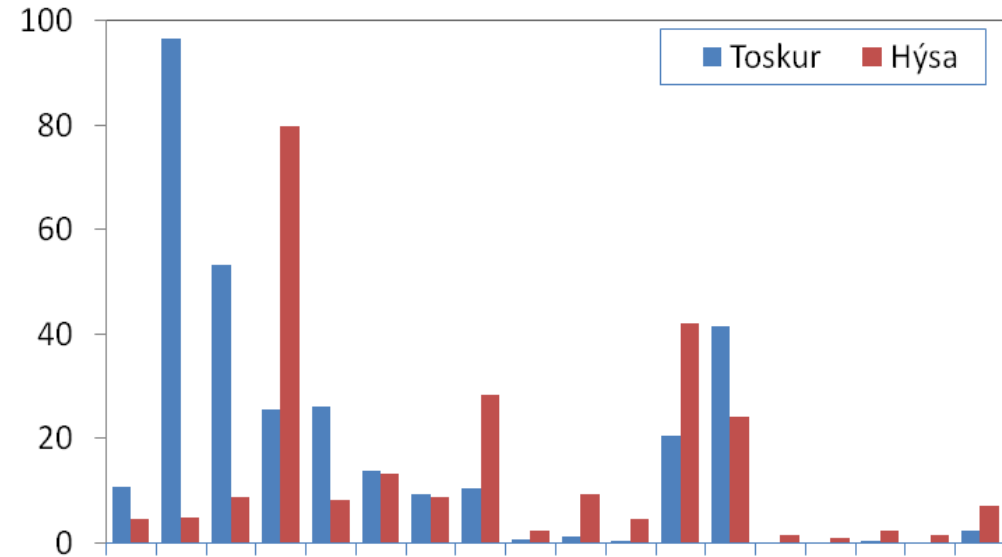


Longd (mm)

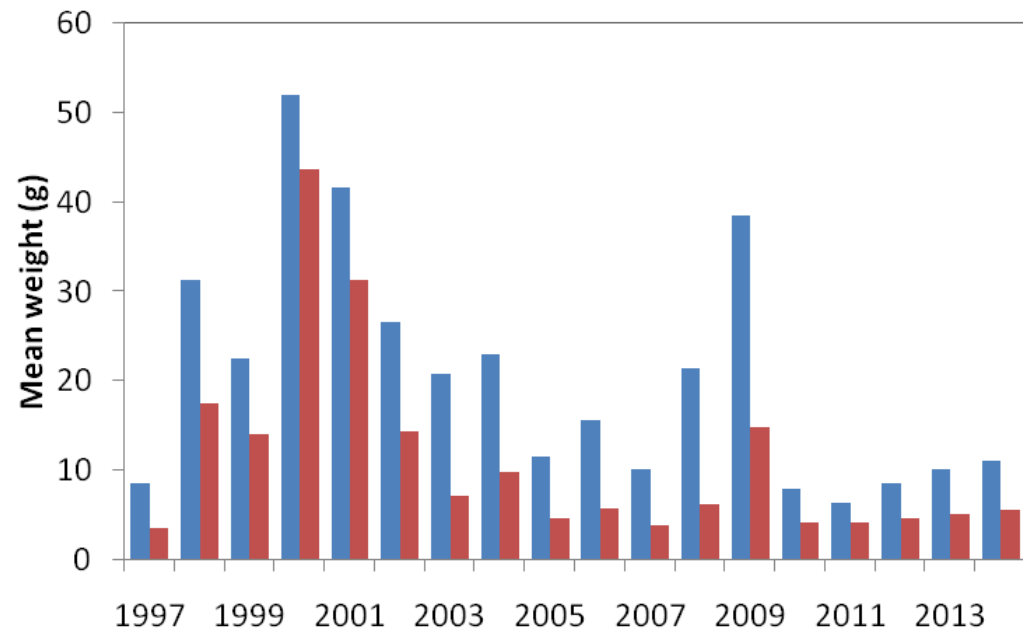


Yngul

Tal (indeks)



Vekt (g)

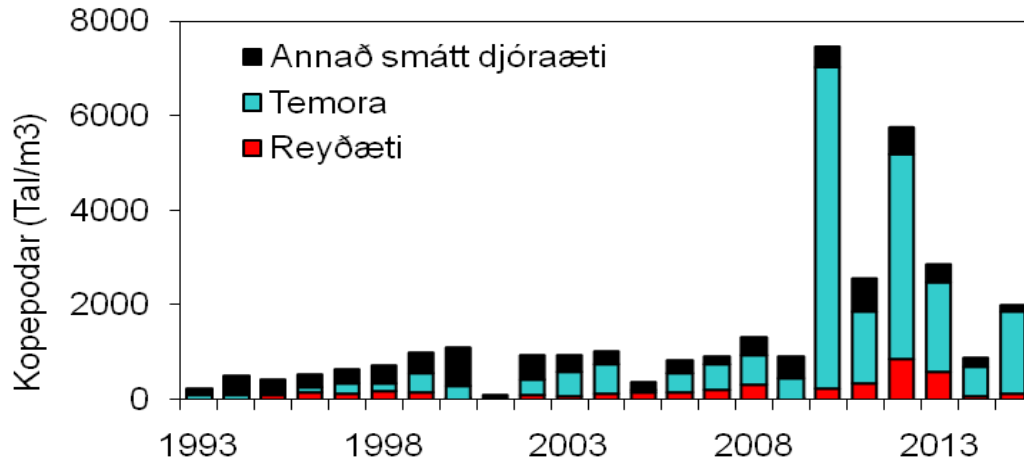


Djóraæti á Landgrunnum

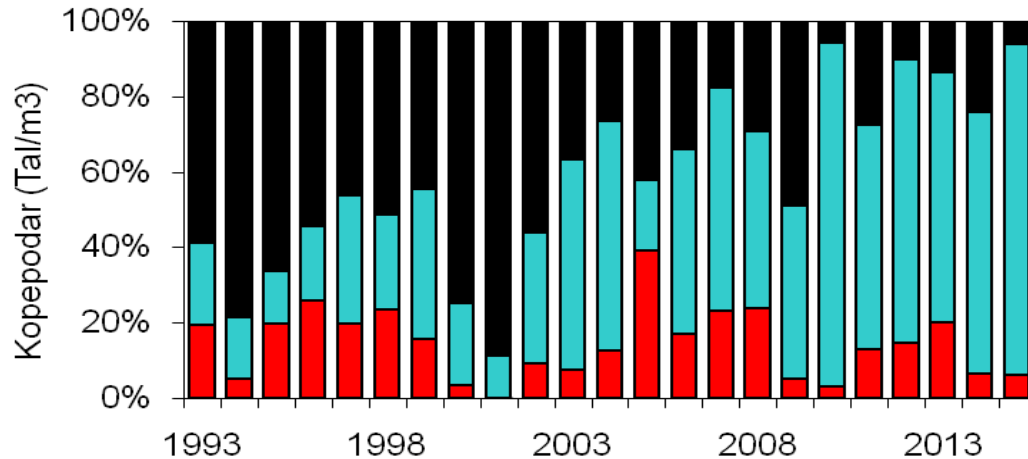
Juni (Yngultúrurin)



Reyðæti
(*Calanus*)



Temora



Reyðæti og Temora

