

Oceanic ecosystems – links between Norwegian Spring Spawning Herring, zooplankton and marine climate



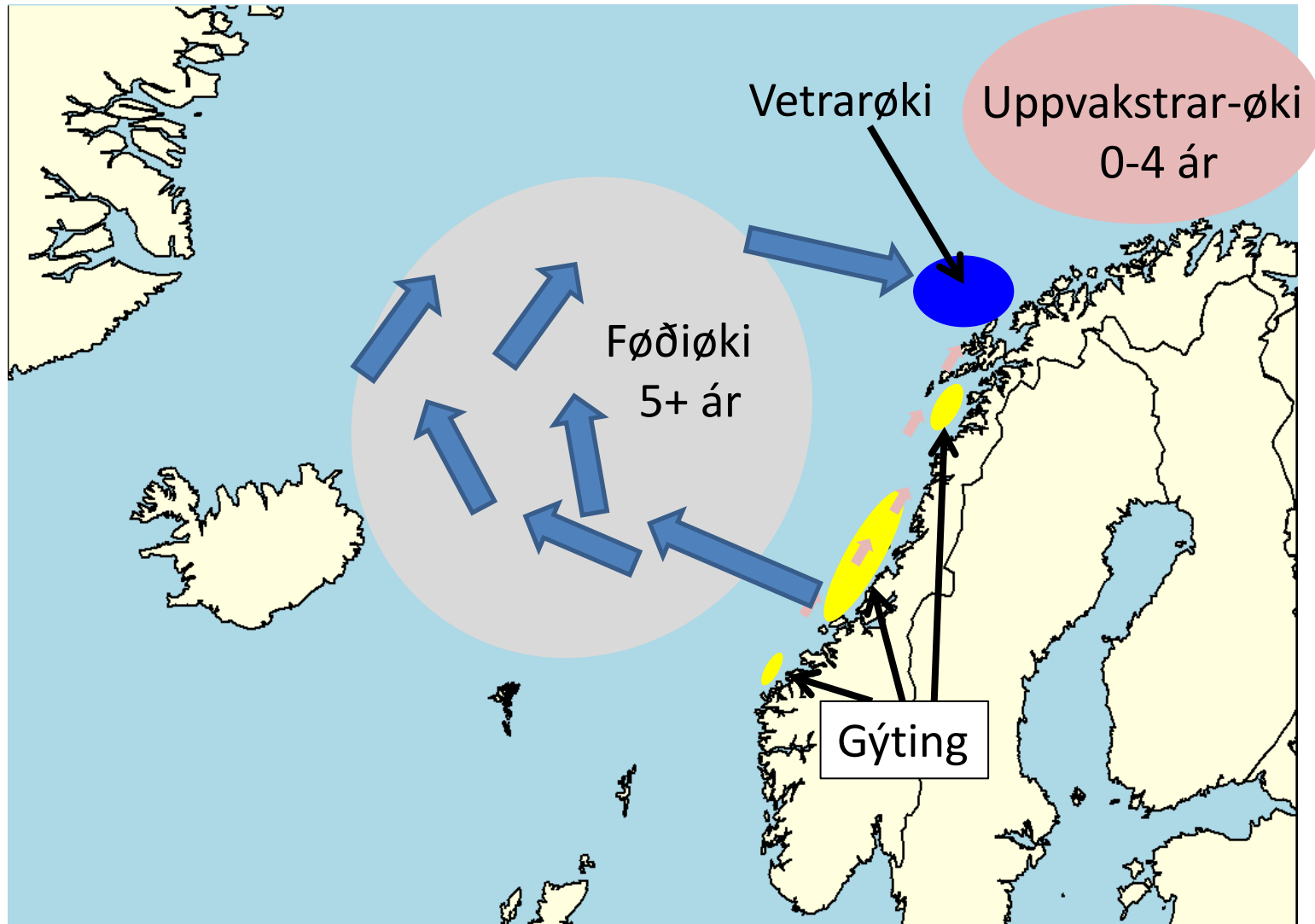
Inga Kristiansen

**Co-workers: Hjálmar Hátún, Jan Arge Jacobsen,
Eydna í Homrum & Sólvá Eliassen**

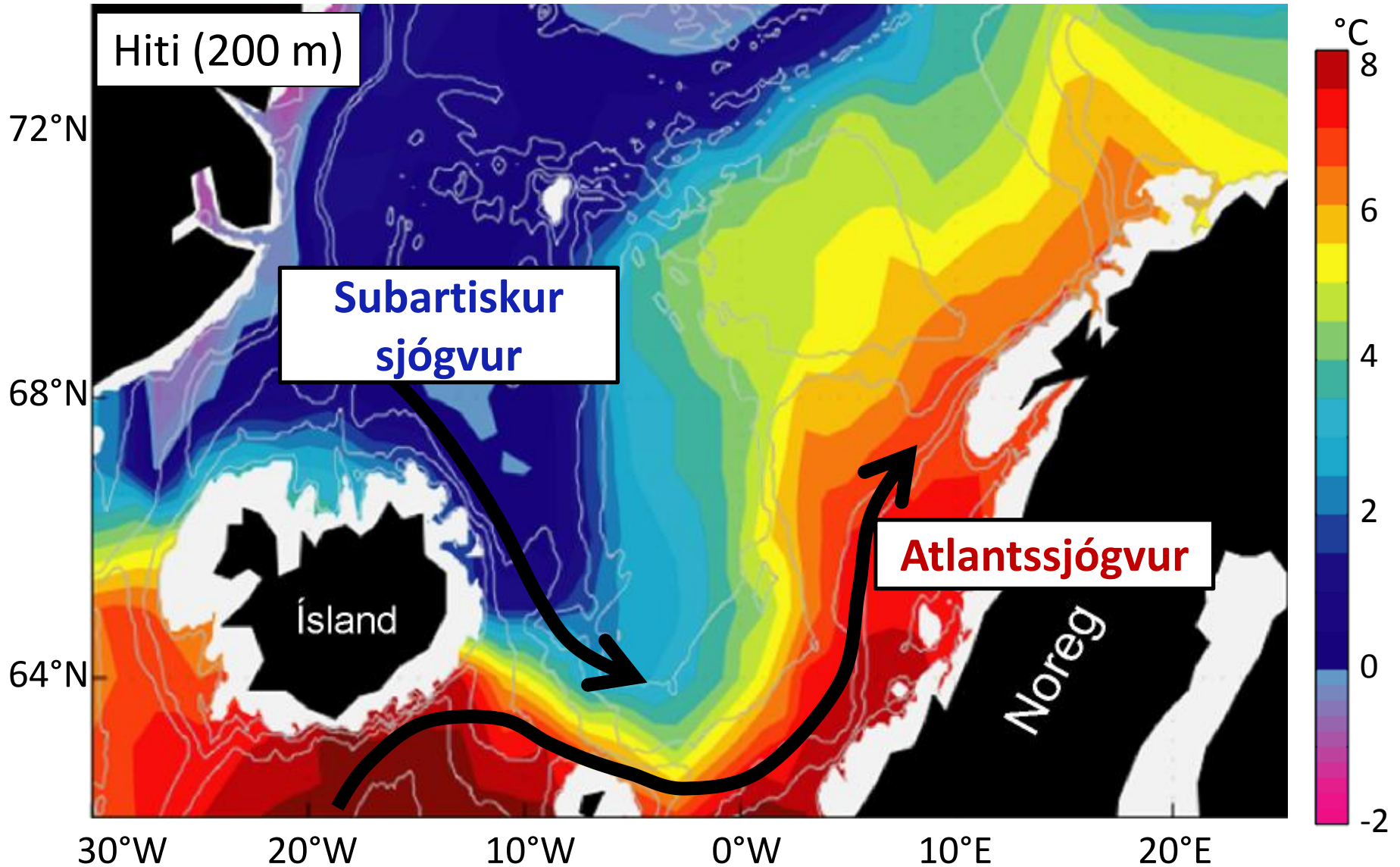


HAVSTOVAN
FAROE MARINE RESEARCH INSTITUTE

Lívsringrás og ferðingarmynstur



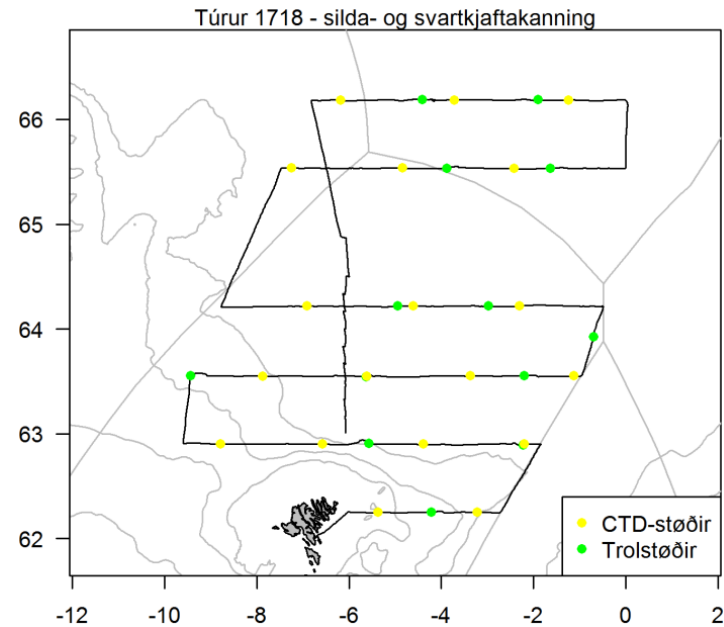
Sjóvarhiti í Norðhøvum



Sildakanningar



- Felagskanningar í mai síðan 1995

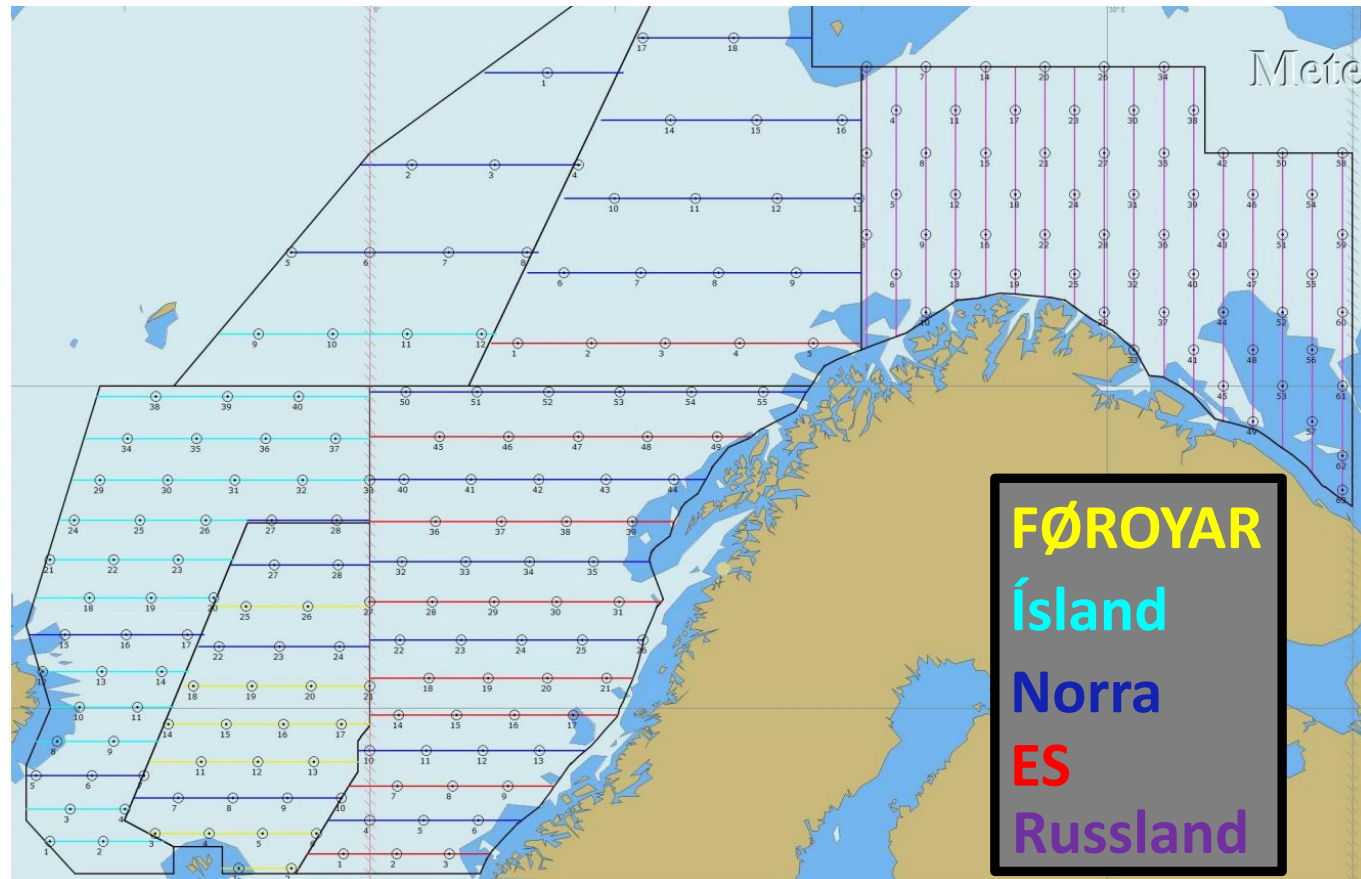


Sildakanningar



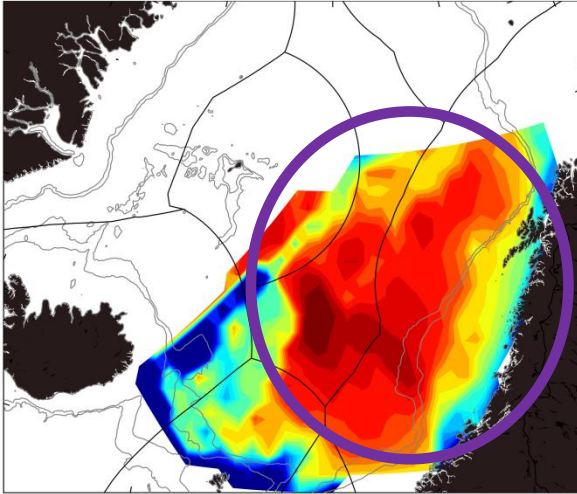
- Felagskanningar í mai síðan 1995

- Nøgd av sild
- Hiti og salt
- Djóraæti

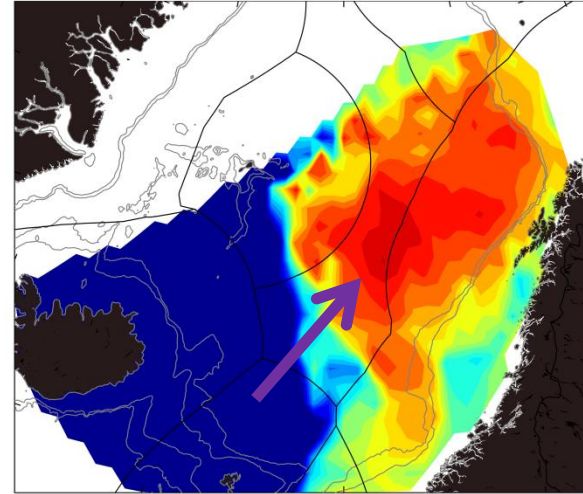


Útbreiðsla í mai

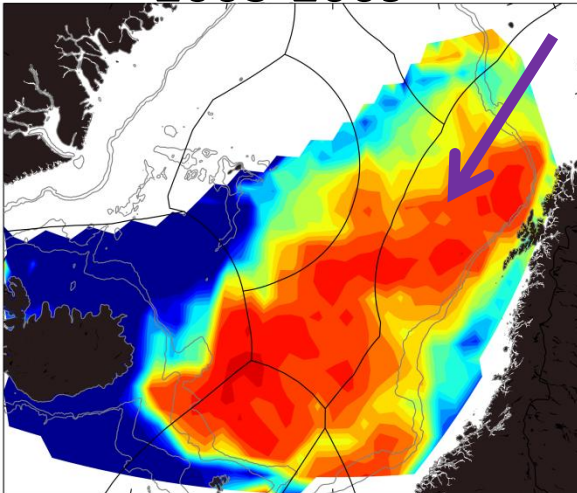
1996-1998



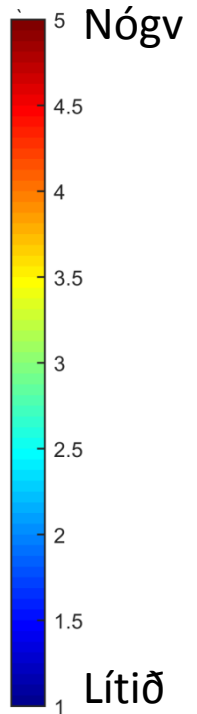
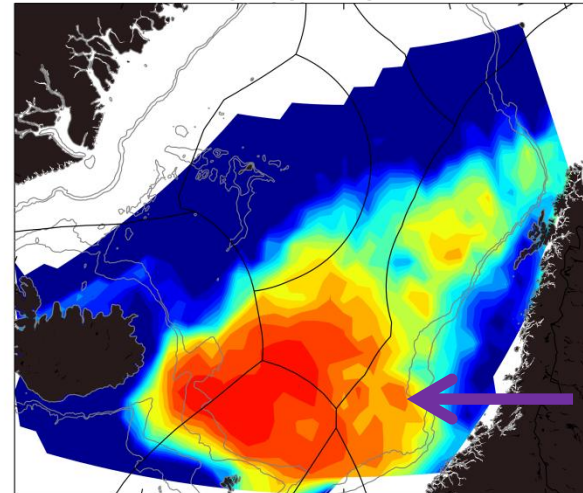
1999-2002



2003-2009

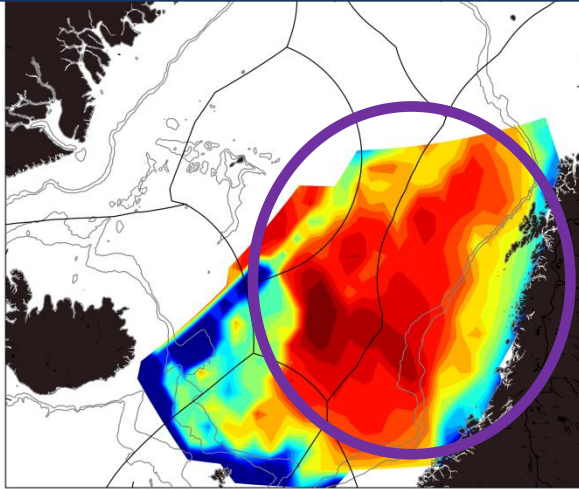


2010-2017

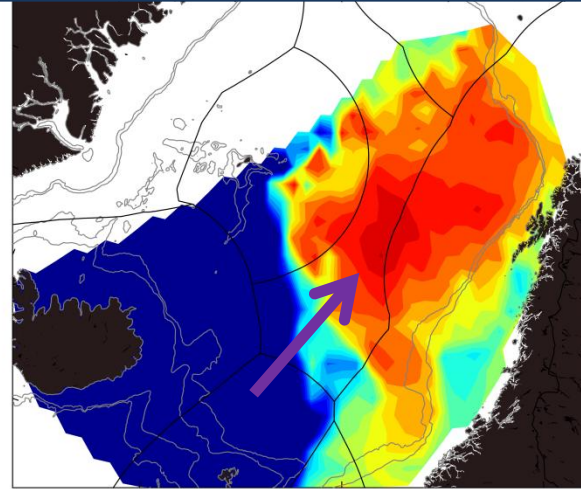


Útbreiðsla í mai

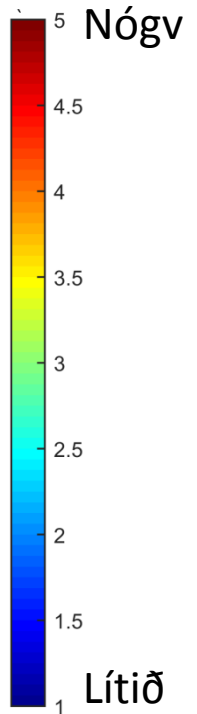
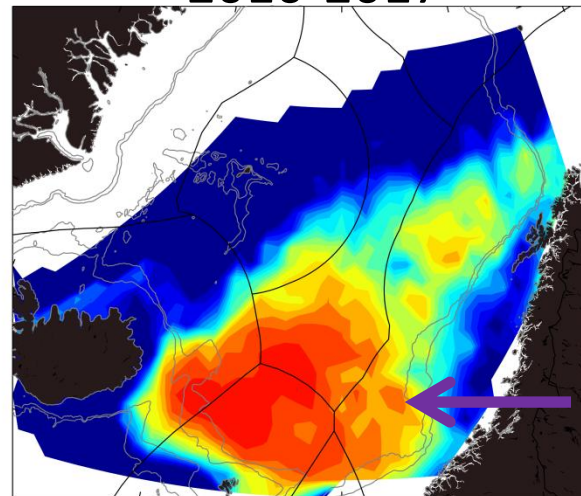
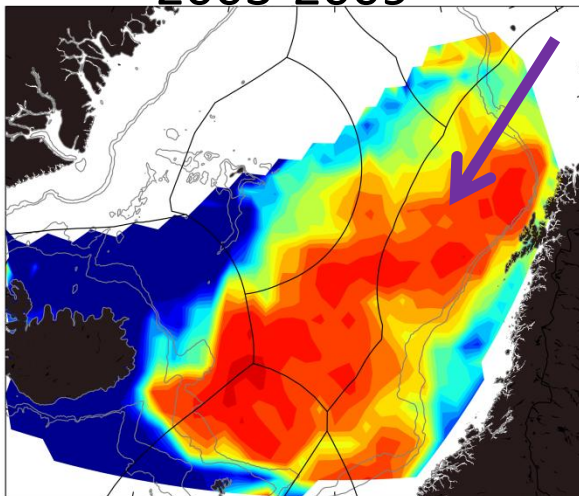
Hví broytir sildin ferðingarmynstur?



2003-2009



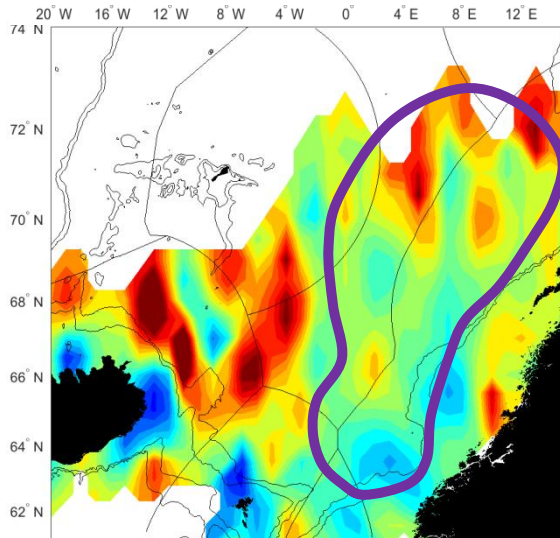
2010-2017



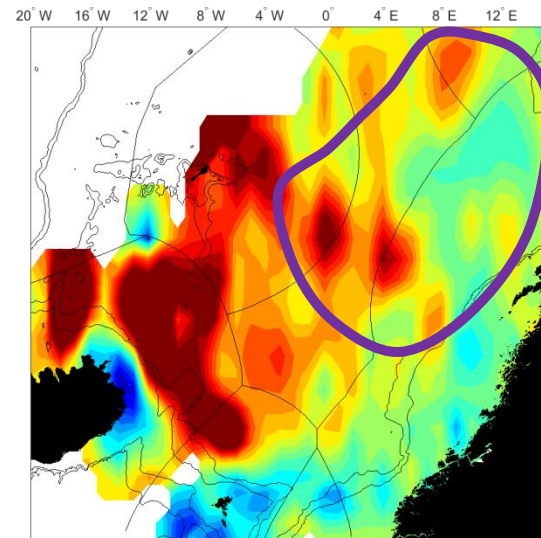


Nøgd av djóraæti í mai

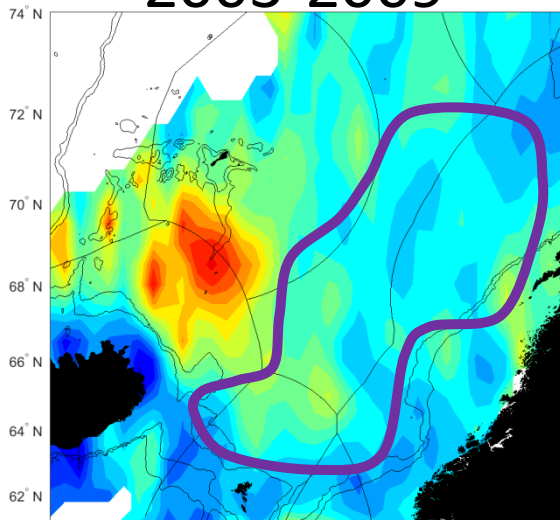
1996-1998



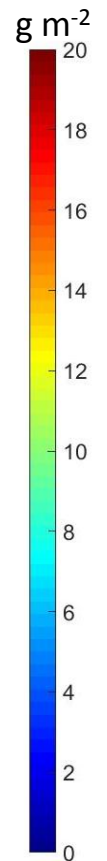
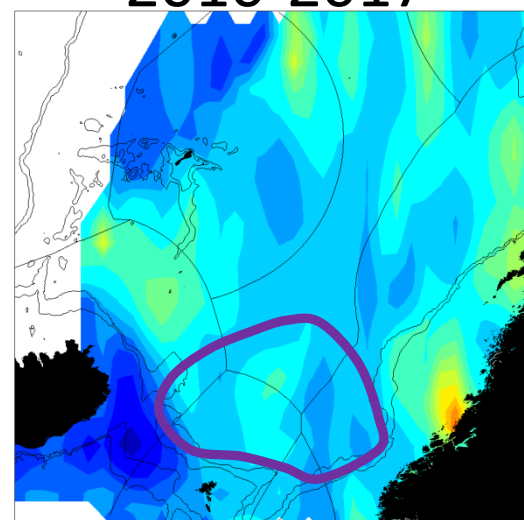
1999-2002



2003-2009



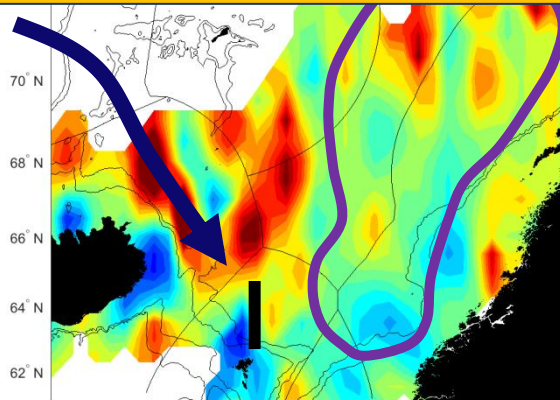
2010-2017



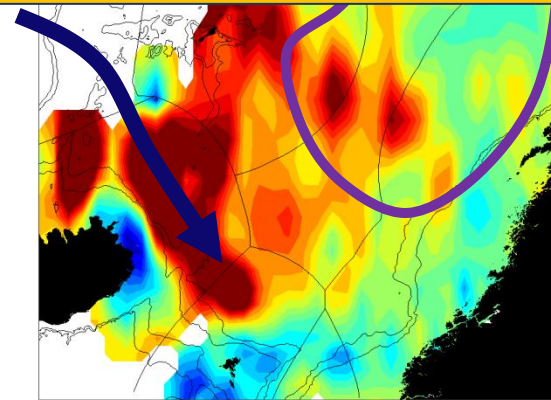


Nøgd av djóraæti í mai

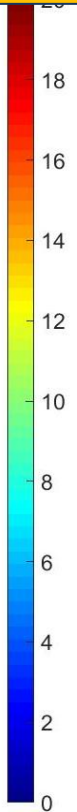
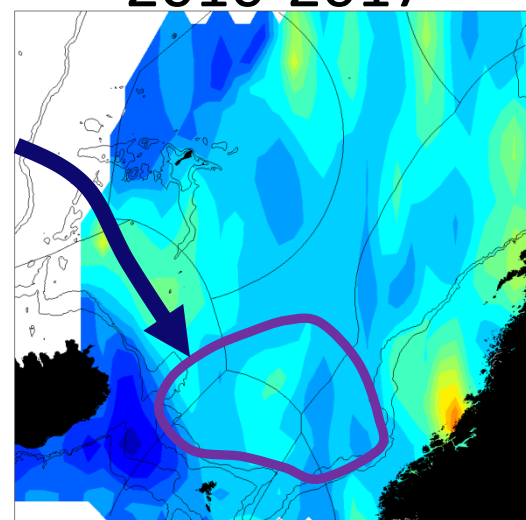
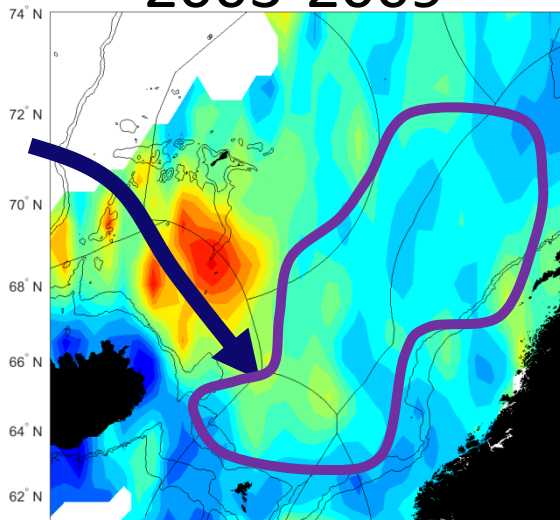
Tykist at verða umvent samband ímillum
føði & ferðingarmynstur hjá sild



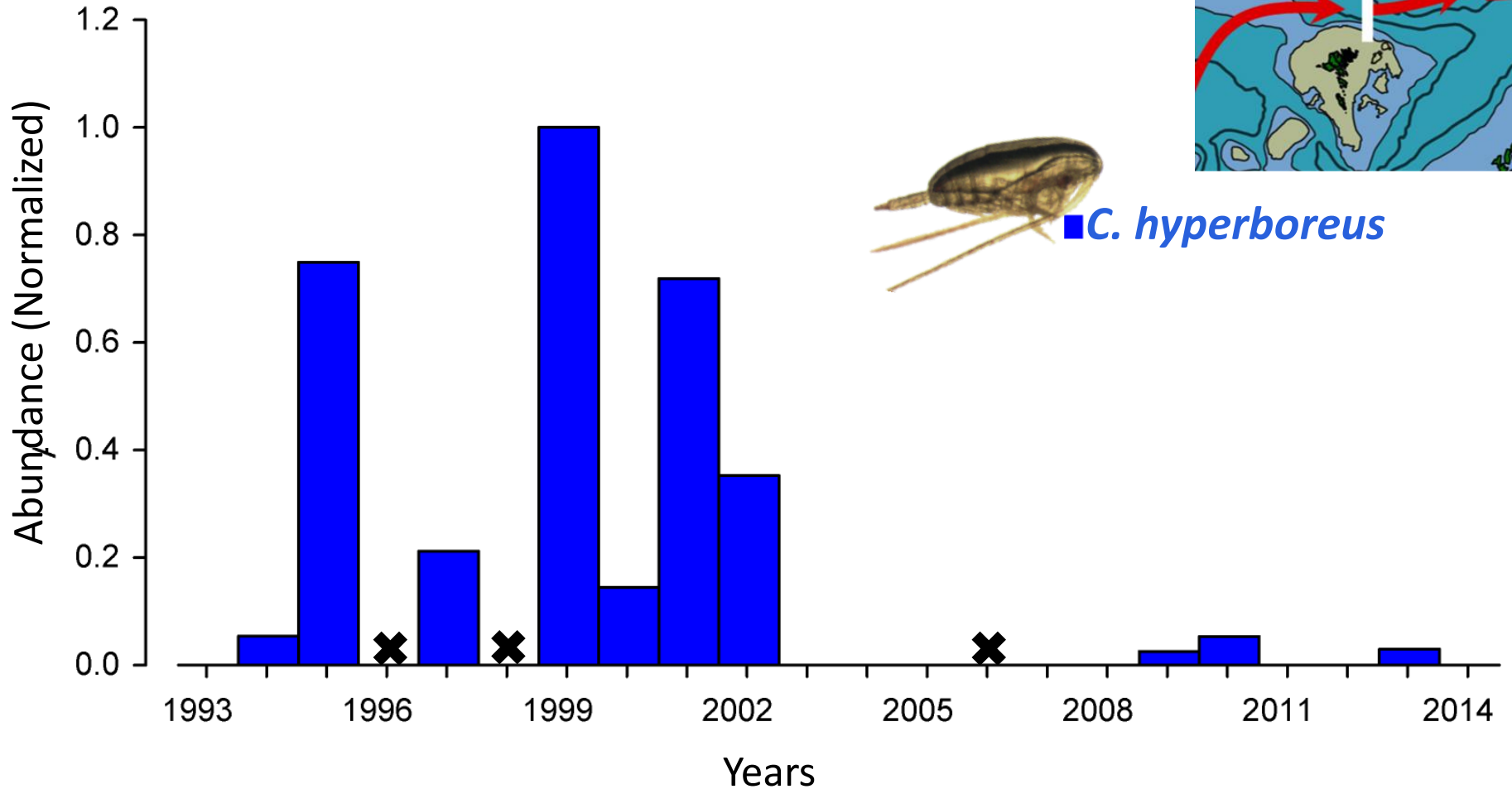
2003-2009



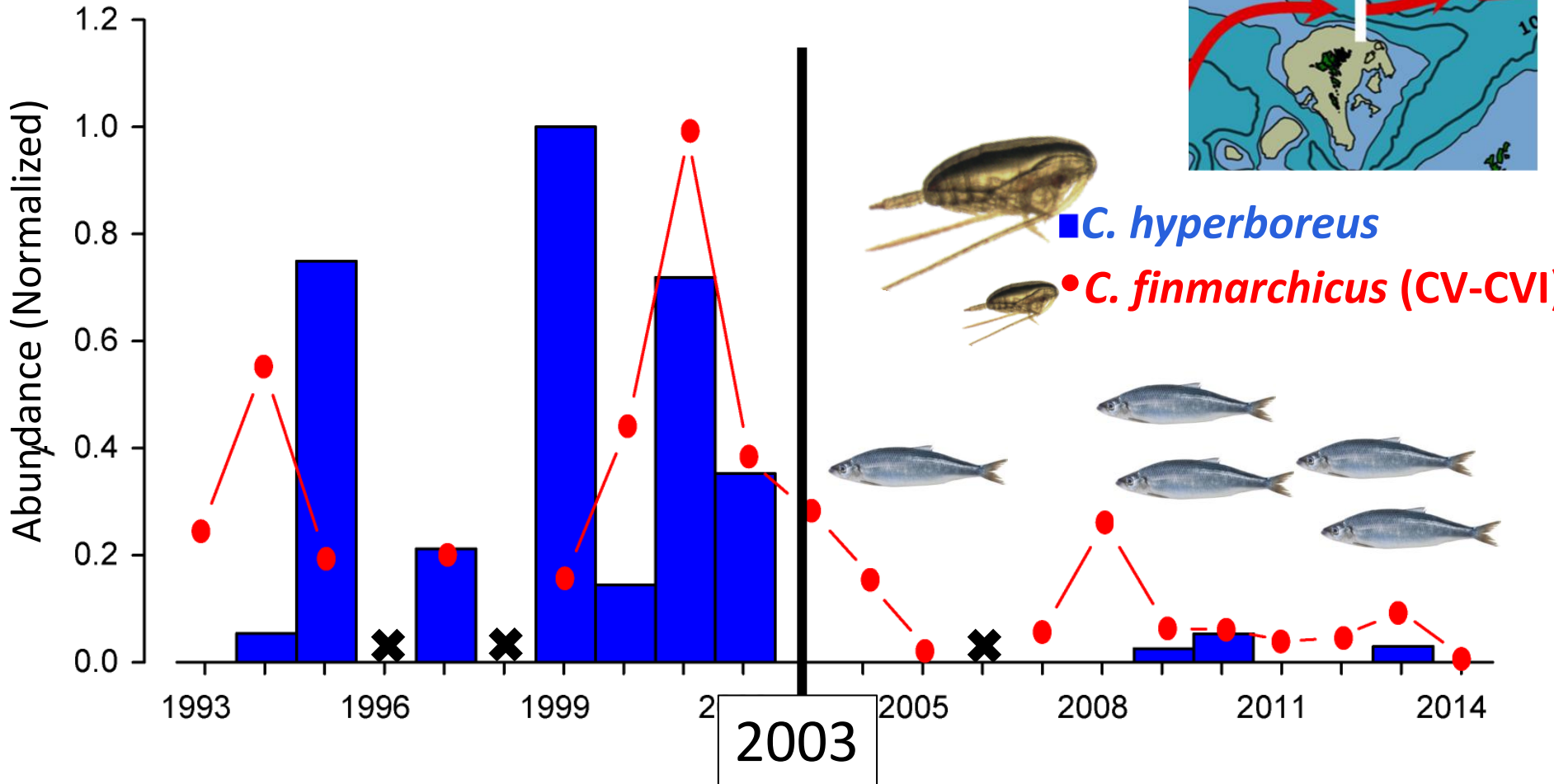
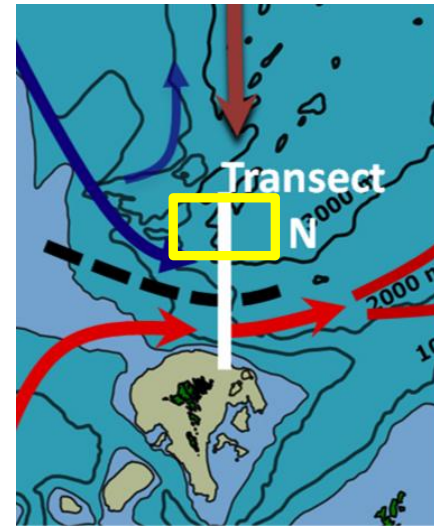
2010-2017



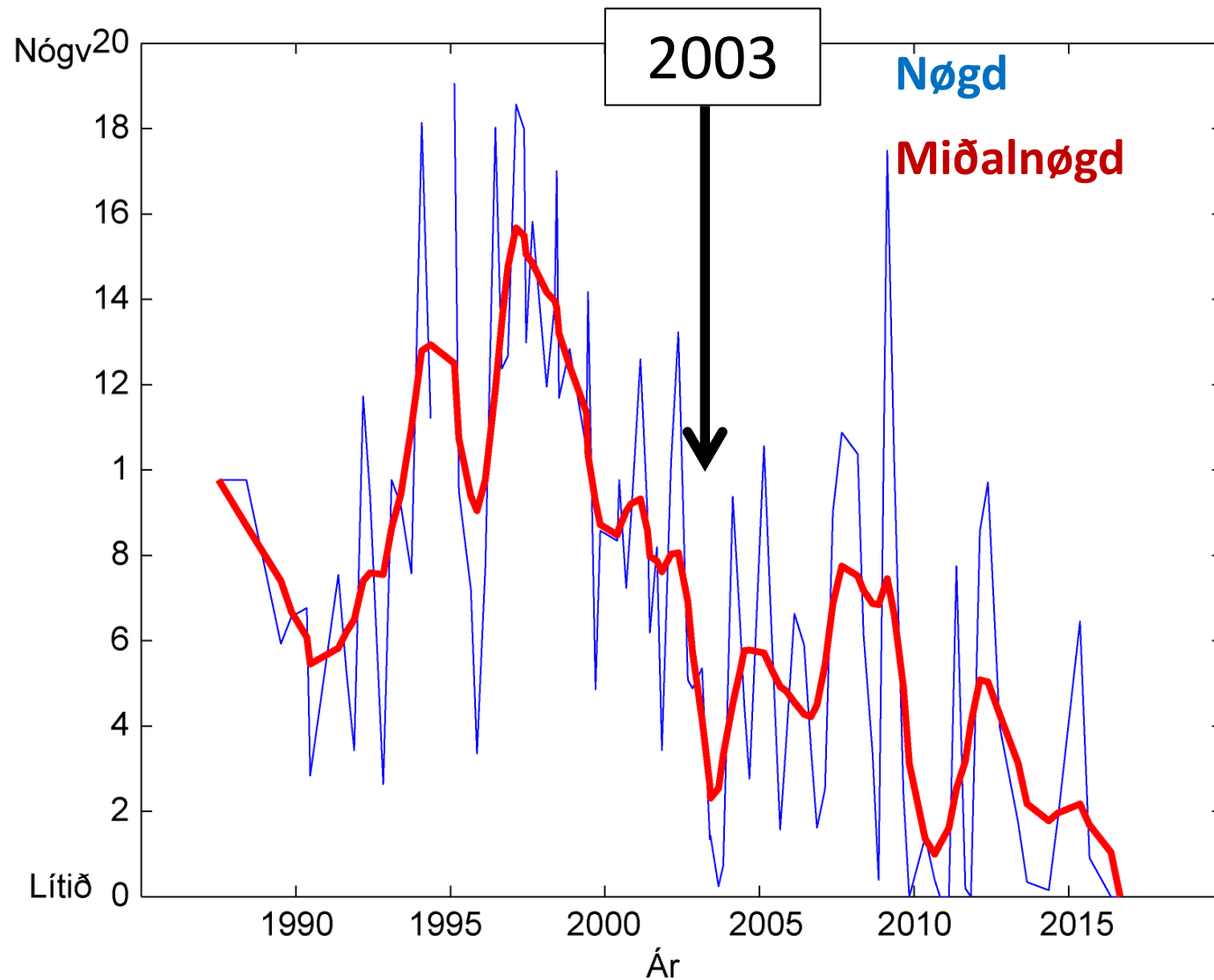
Nøgd av reyðæti



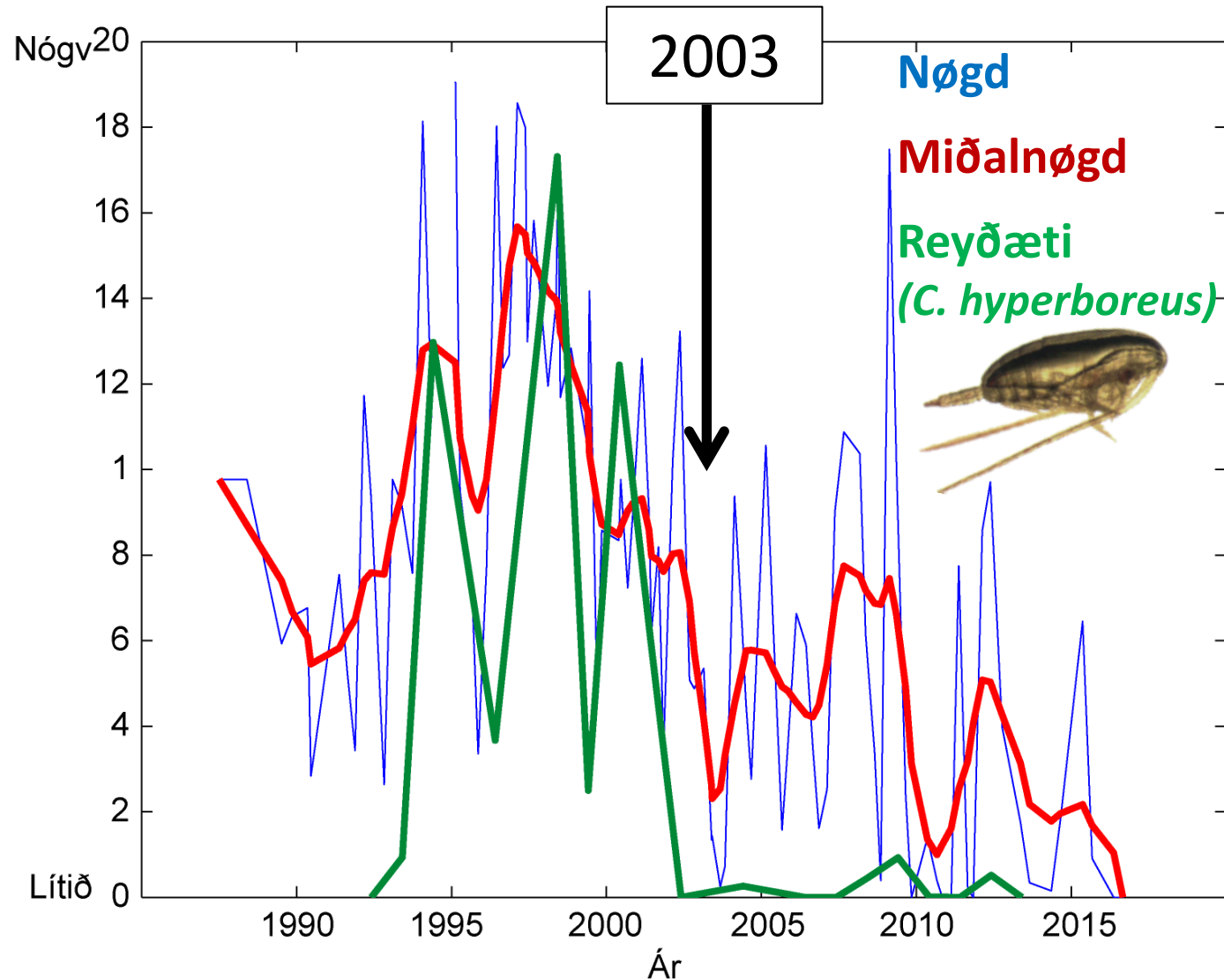
Nøgd av reyðæti



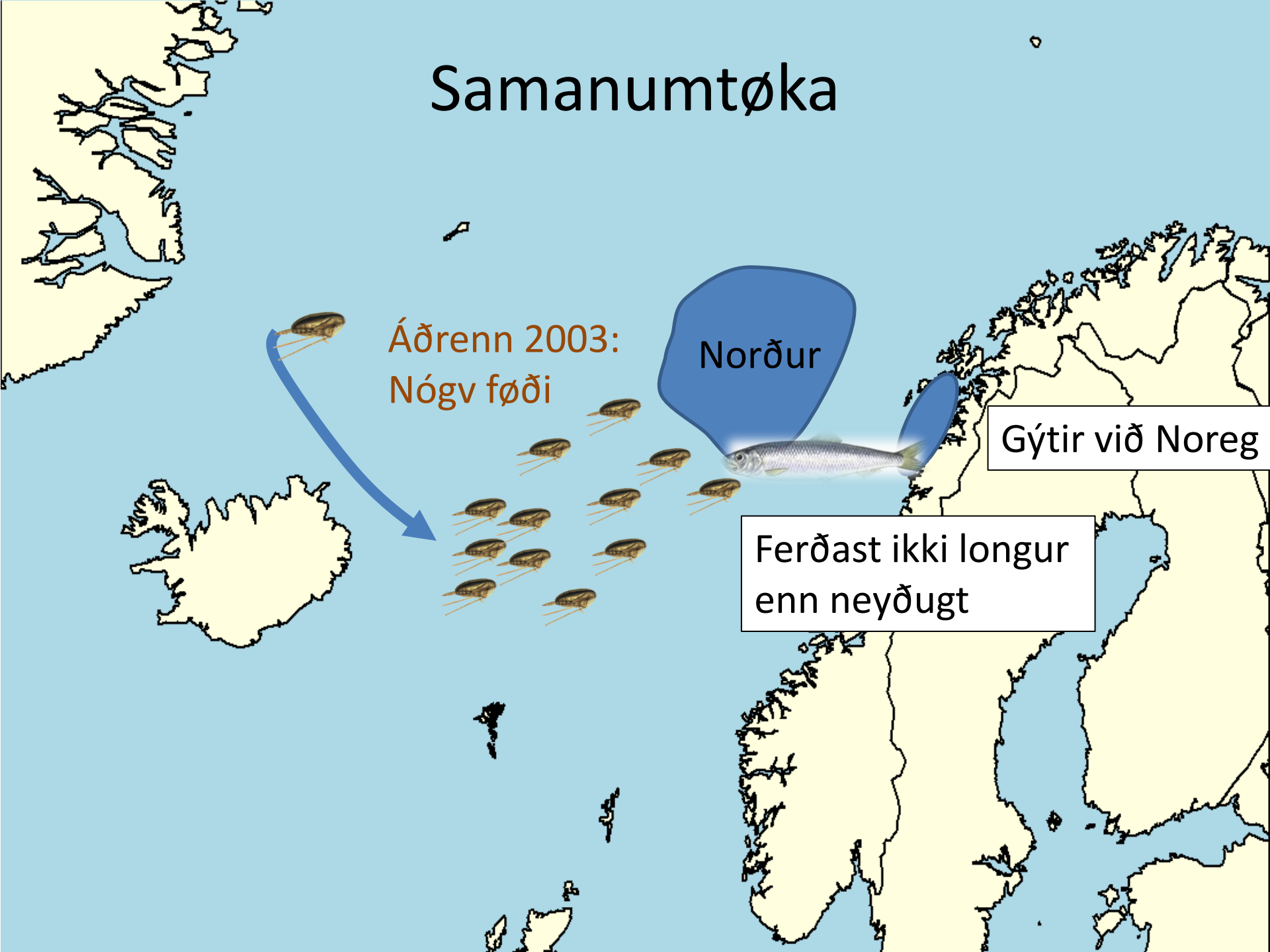
Nøgd av køldum sjógví á skurði N



Nøgd av køldum sjógvi á skurði N



Samantumtøka



Áðrenn 2003:
Nógv fœði

Norður

Gýtir við Noreg

Ferðast ekki longur
enn neyðugt

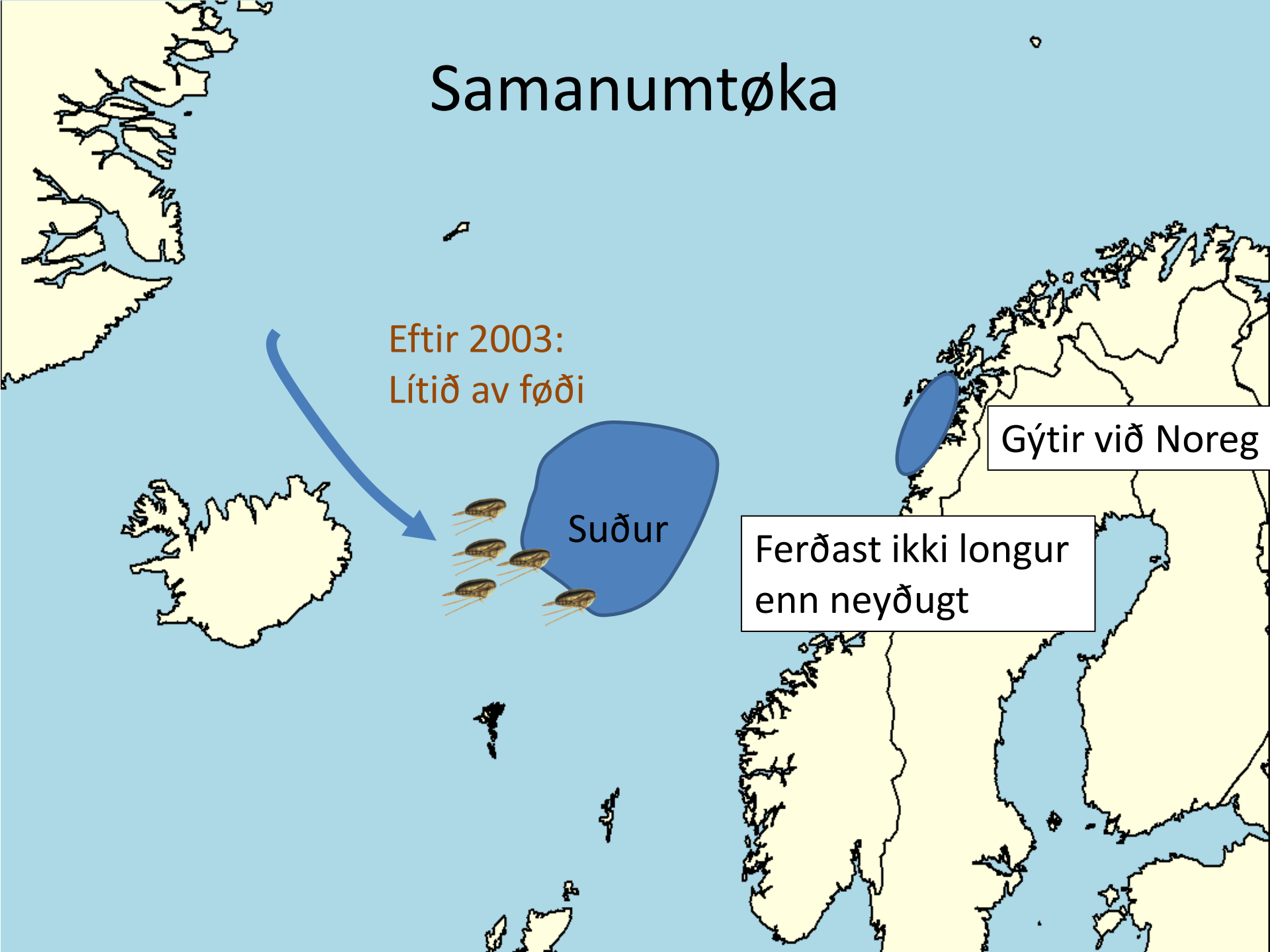
Samantumtøka

Eftir 2003:
Lítið av føði

Suður

Gýtir við Noreg

Ferðast ikki longur
enn neyðugt



Samantumtøka

Eftir 2003:
Lítið av føði

Suður

Gýtir við Noreg

Ferðast ikki longur
enn neyðugt

Aðrir spurningar sum verða kannaðir:

- hiti
- stovnsstödd & aldursamanseting
- kapping við onnur fiskasløg