

4.4.2 Cod in Subdivision Vb₂ (Faroe Bank)

Single-stock exploitation boundaries

The new data (landings and survey indices) available for this stock do not change the perception of the stock and give no reason to change the advice from that given last year in 2008. Therefore, the advice for the fishery in 2010 is the same as the advice given in 2008 for the 2009 fishery: *“Because of the very low stock size ICES advises that the fishery should be closed. Reopening the fishery should not be considered until both survey indices indicate a biomass at or above the average of the period 1996–2002”*

Source of information

Report of the North-Western Working Group, 29 April 5 May 2009 (ICES CM 2009/ACOM:04).

Fishing Year	ICES Advice	Predicted catch corresp. to advice	Agreed TAC	Official Landings
1987	No assessment	-		3.5
1988	No assessment	-		3.1
1989	Addition to Faroe Plateau TAC	~2.0		1.4
1990	Access limitation may be required	-		0.6
1991	Access limitation may be required	-		0.4
1992	No fishing	0.3		0.3
1993	TAC	0.5		0.4
1994	TAC	0.5		1.0
1995	Precautionary TAC	0.5		1.2
1996	Precautionary TAC	0.5	1.0	2.5
1997	Effort at present levels	0.7	Not applicable	3.9
1998	Effort at present levels	-		3.5
1999	Effort not to exceed that exerted in 1996–	-		1.3
2000	Effort not to exceed that of 1996–1998	-		1.2 ¹⁾
2001	Effort not to exceed that of 1996–1999	-		1.8 ¹⁾
2002	Effort not to exceed that of 1996–2000	-		1.9 ¹⁾
2003	Effort not to exceed that of 1996–2001	-		5.7 ¹⁾
2004	Effort not to exceed that of 1996–2002	-		4.3 ¹⁾
2005	Effort not to exceed that of 1996–2002	-		1.0 ¹⁾
2006	Effort not to exceed that of 1996–2002	-		0.95 ¹⁾
2007	Effort not to exceed that of 1996–2002	-		0.45 ¹⁾
2008	No fishing	0		0.22 ¹⁾
2009	No fishing	0		
2010	Same advice as last year	0		

Fishing year: 1 September–31 August the following year

Weights in '000 t.

¹⁾ Working group estimates.

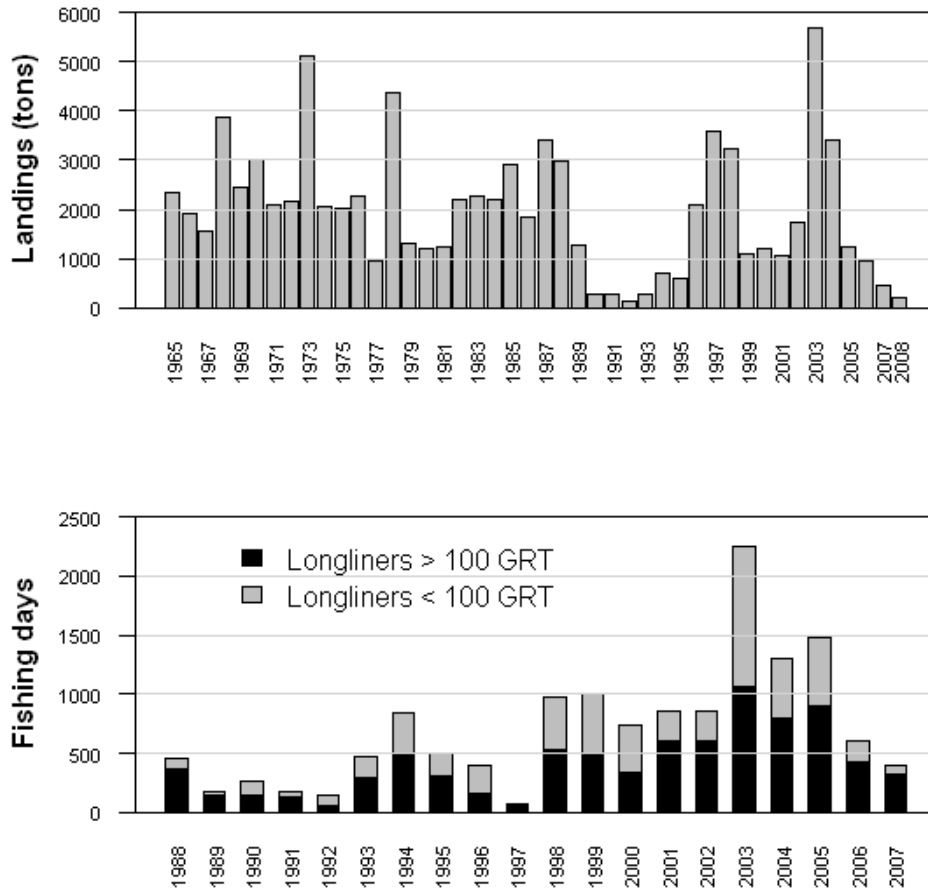


Figure 4.4.2.1. Reported landings 1965–2008. Since 1992 only catches from Faroese and Norwegian vessels are considered to be taken on the Faroe Bank. Lower plot: fishing days 1988–2007 for longline gear type in the Faroe Bank (exerted). Note that the fishing days for 2008 were not available to ICES.

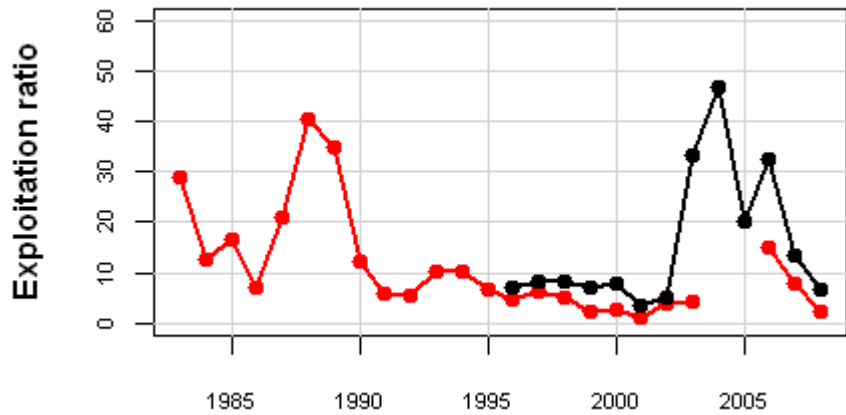


Figure 4.4.2.2. Faroe Bank (Subdivision Vb₂) cod. Exploitation ratio (ratio of landings to survey interpreted as an index of exploitation rate) where the red lines denote spring and the black line summer.

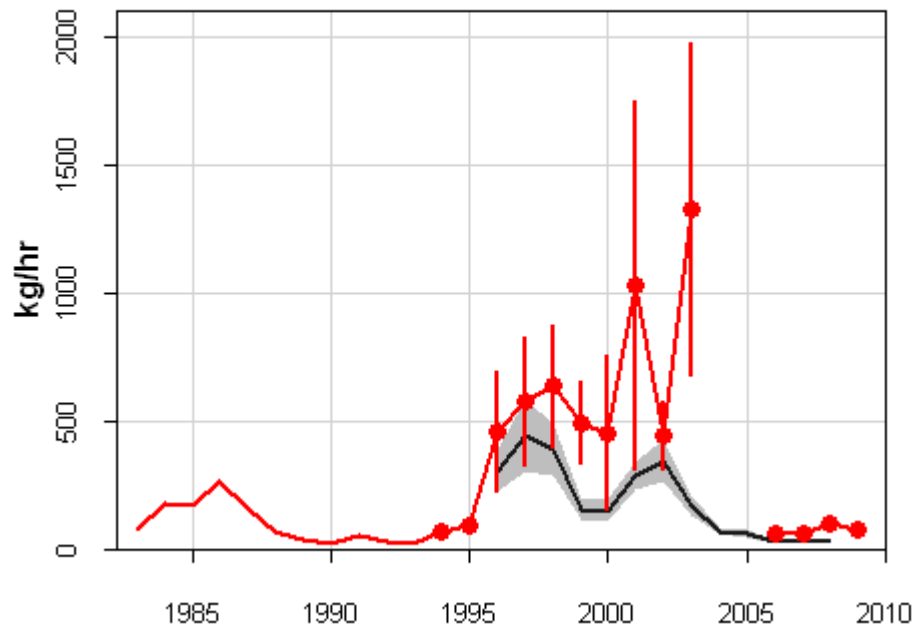


Figure 4.4.2.3. Faroe Bank (Subdivision Vb₂) cod. Catch-per-unit-effort in the spring (red lines) and summer (black line) groundfish survey. Vertical bars and shaded areas show the standard error in the estimation of indexes.

	1986	1987	1988	1989	1990	1991	1992	1993	1994	1995	1996		
Faroe Islands	1836	3409	2966	1270	289	297	122	264	717	561	2051		
Norway	6	23	94	128	72	38	32	2	8	40	55		
UK (E/W/N/I)	-	-	-	-	2 ²	1 ²	74 ²	186 ²	56 ²	43 ²	126 ³		
UK (Scotland)	63 ³	47 ³	37 ³	14 ³	205 ³	90 ³	176 ³	118 ³	227 ³	551 ³	382 ³		
Total	1905	3479	3091	1412	566	425	330	385	953	1152	2488		
Used in assessment					289	297	154	266	725	601	2106		
	1997	1998	1999	2000	2001	2002	2003	2004	2005	2006	2007	2008	
Faroe Islands	3459	3092	1001		1094	1840	5957	3607	1270	1005	471	232 [*]	
Norway	135	147	88	49	51	25	72	18	37	10	7	1 [*]	
UK (E/W/N/I)	61 ³	27 ³	51 ³	18 ³	50 ³	42 ³	15 ³	15 ³	24 ³	1 ³			
UK (Scotland)	277 ³	265 ³	210 ³	245 ³	288 ³	218 ³	254 ³	244 ³	1129 ³	278 ³	53		
Total	3871	3504	1350	312	1483	2125	6298	3884	2460	1294	531	233 [*]	
Correction of Faroese catches in Vb2					-65	-109	-353	-214	-75	-60	-28	-14	
Used in assessment	3594	3239	1089	1194	1080	1756	5676	3411	1232	955	450	219 [*]	
[*] Preliminary													
¹ Includes Vb1.													
² Included in Vb1.													
³ Reported as Vb.													

Table 4.4.2.1. Faroe Bank (Subdivision Vb₂) cod. Nominal catches (tonnes) by countries 1986–2008 as officially reported to ICES. From 1992 the catches by Faroe Islands and Norway are used in the assessment.