

STØÐAN, ÚTLITINI OG UMSITING



Toskur



Hýsa



Upsi



Longa



Brosma

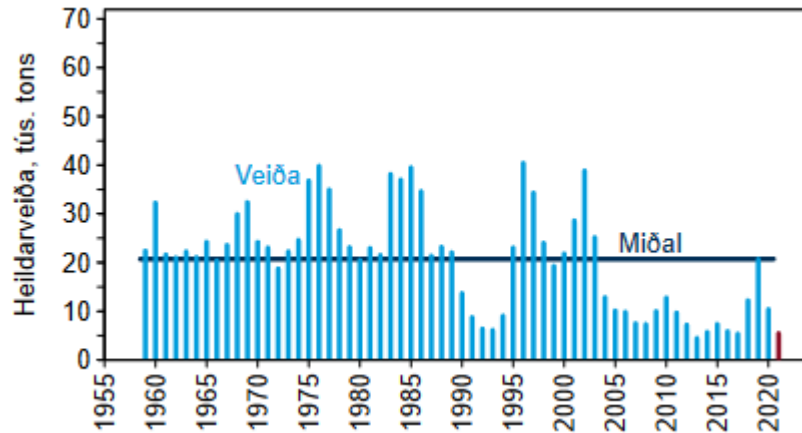


Gullaksur

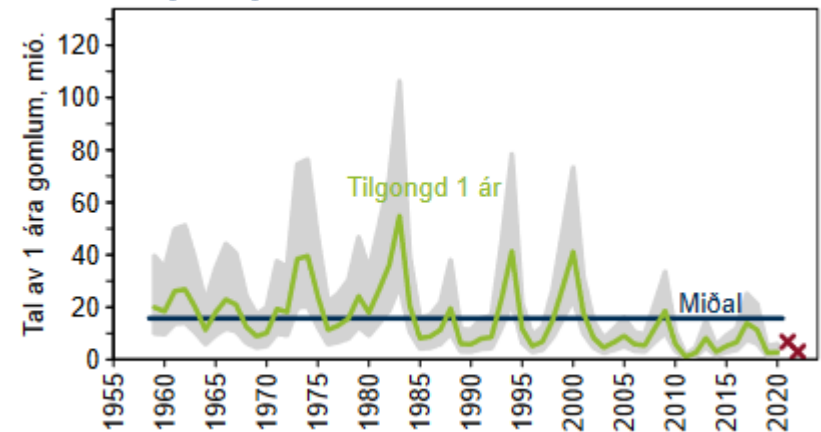
Toskur á landgrunninum



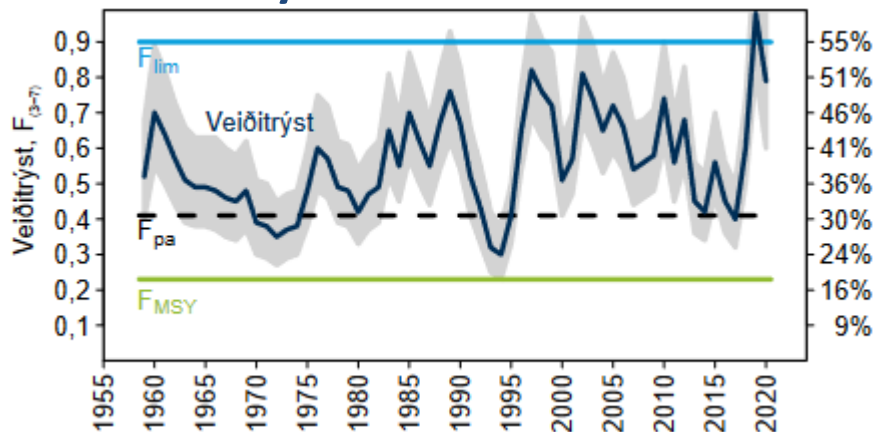
Heildarveiða



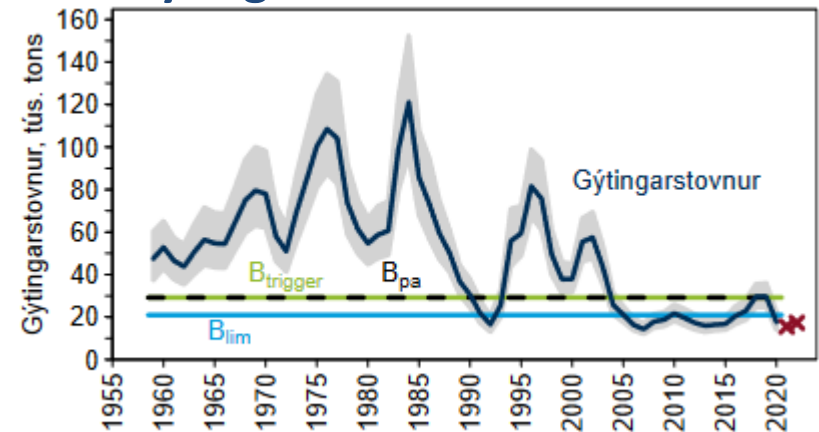
Tilgongd



Veiðitrýst



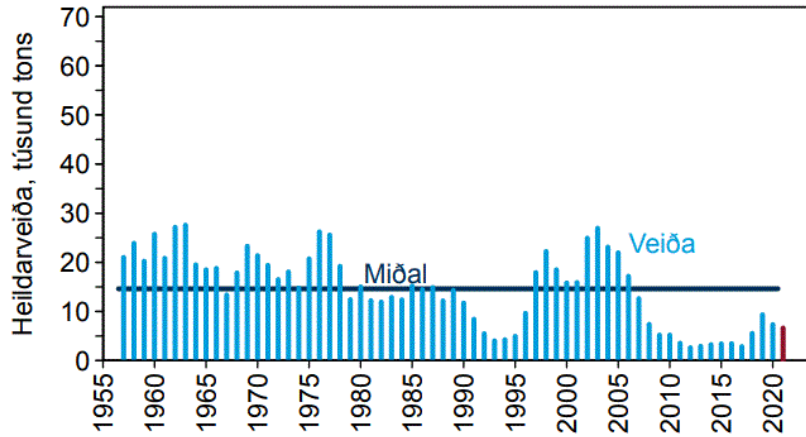
Gýtingarstovnur



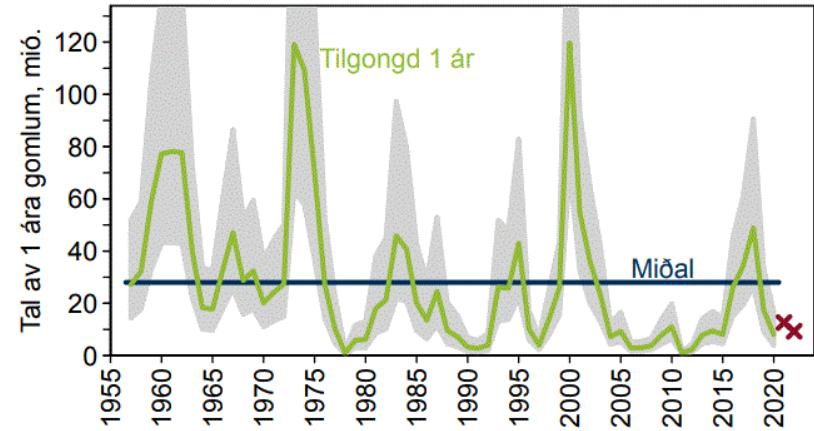
Hýsa



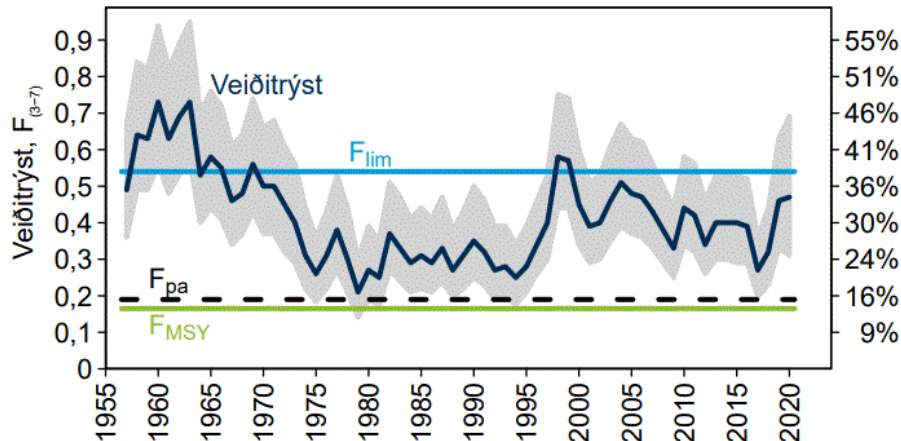
Heildarveiða



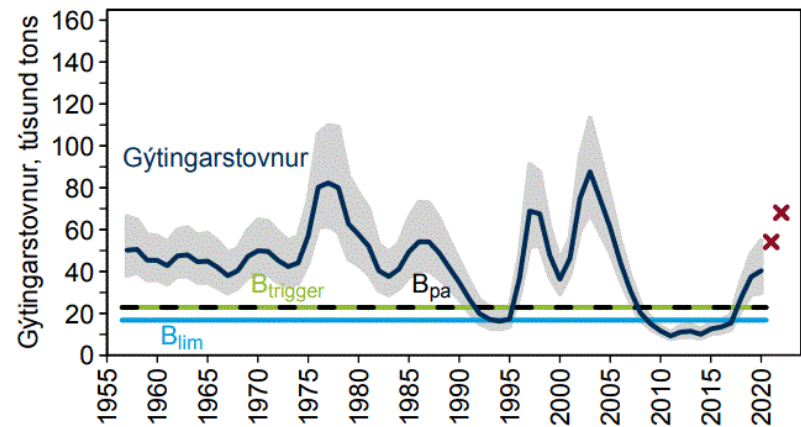
Tilgongd



Veiðitrýst



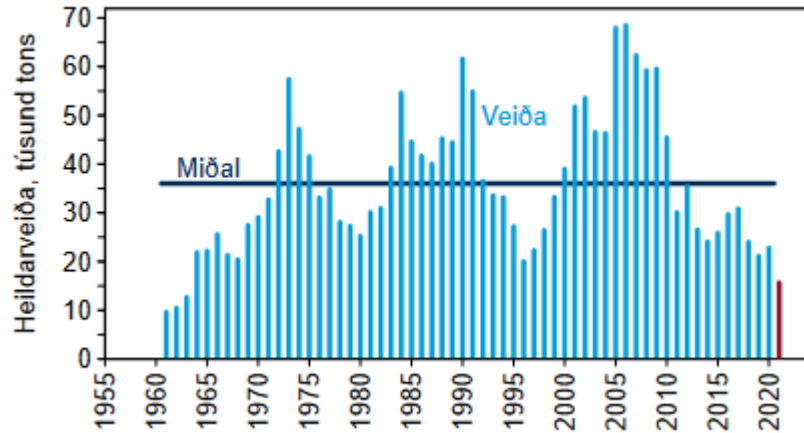
Gýtingarstovnur



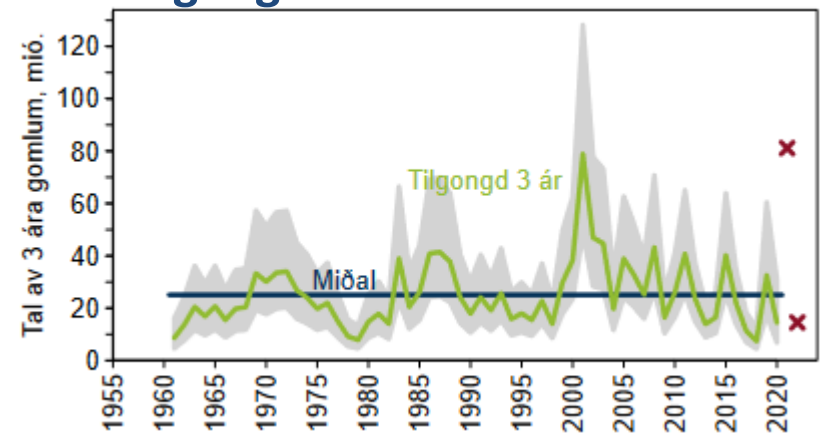
Upsi



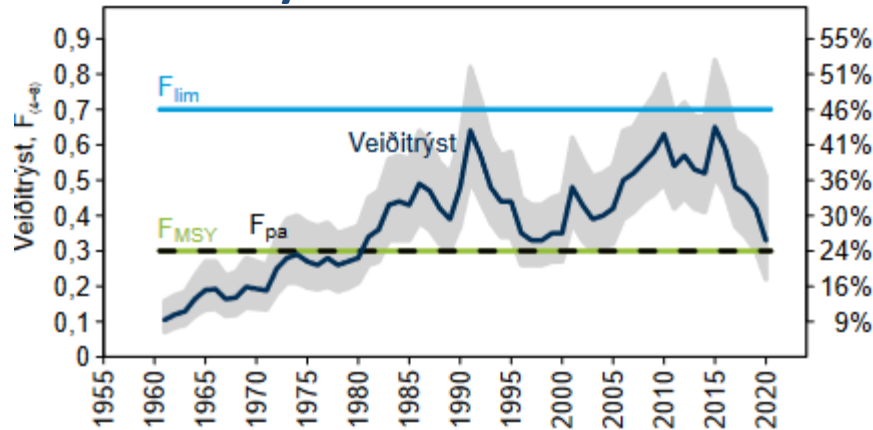
Heildarveiða



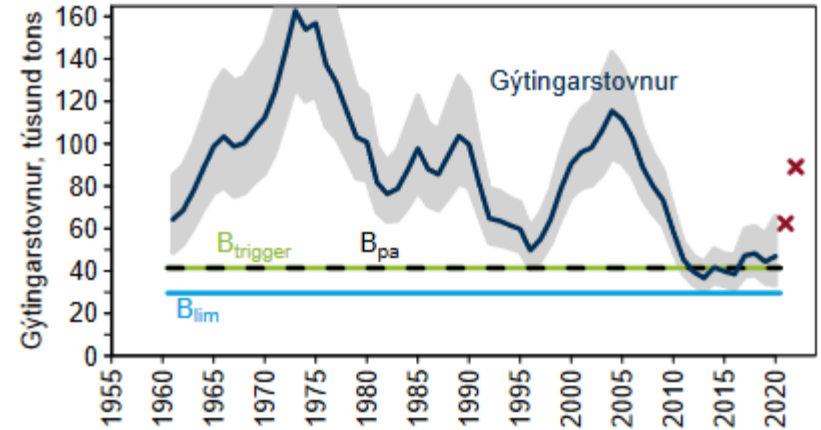
Tilgongd



Veiðitrýst



Gýtingarstovnur

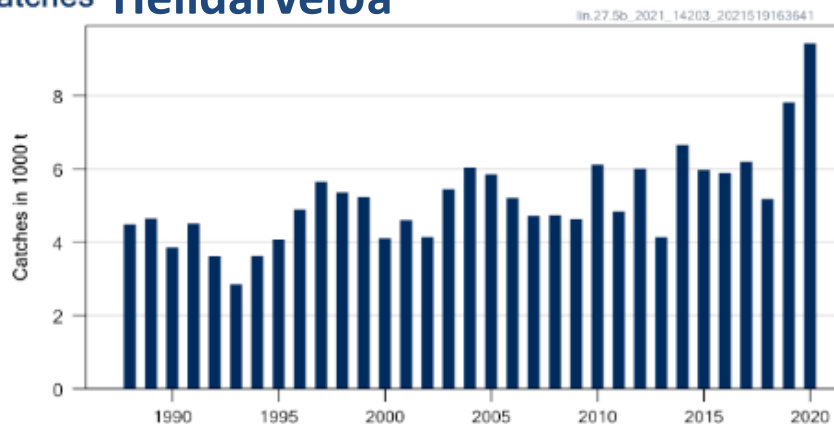


Longa

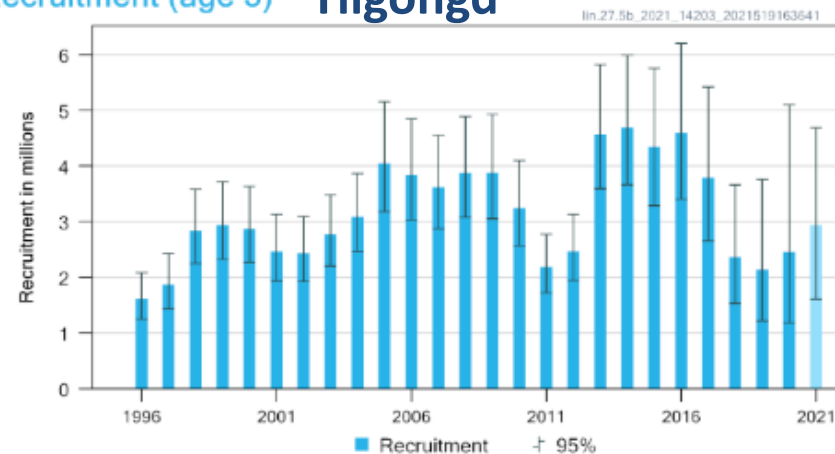


ICES tilmæli 5636 tons í 2022

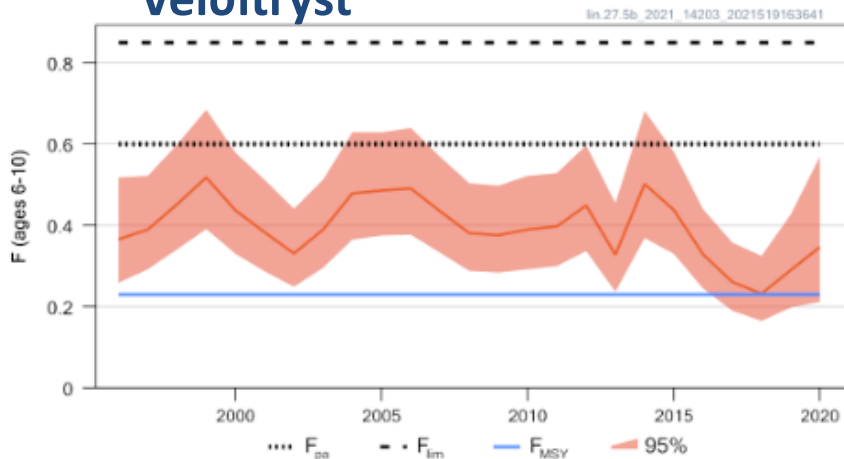
Catches Heildarveiða



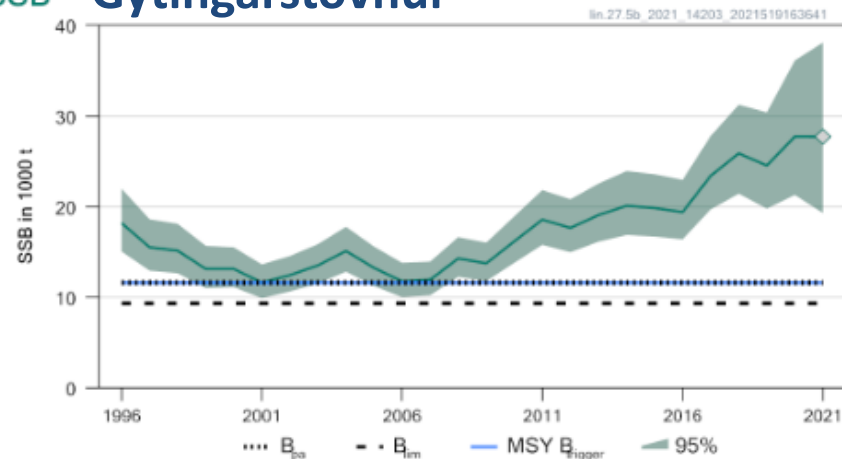
Recruitment (age 3) Tilgongd



F Veiðitrýst



SSB Gýtingarstovnur



Brosma

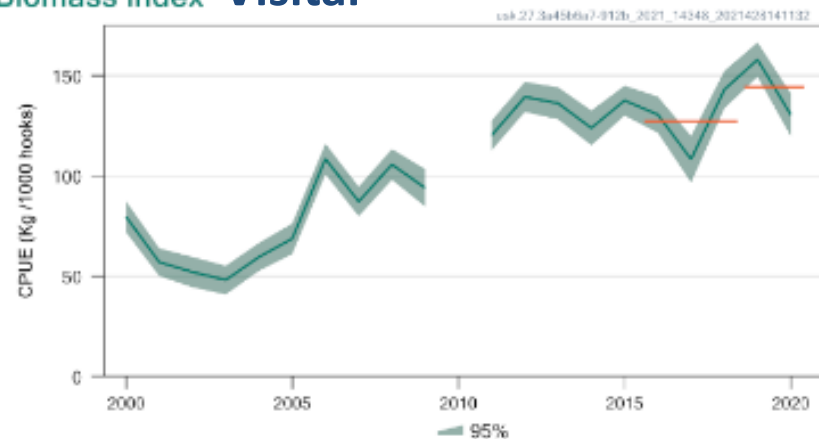


ICES tilmælir 7821 tons í 2022-23 fyri alt økið

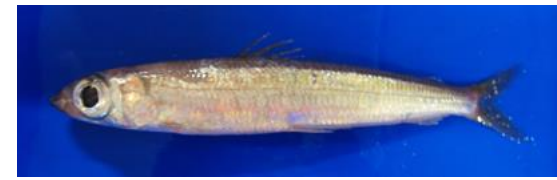
Catches Heildarveiða



Biomass index Vísitil

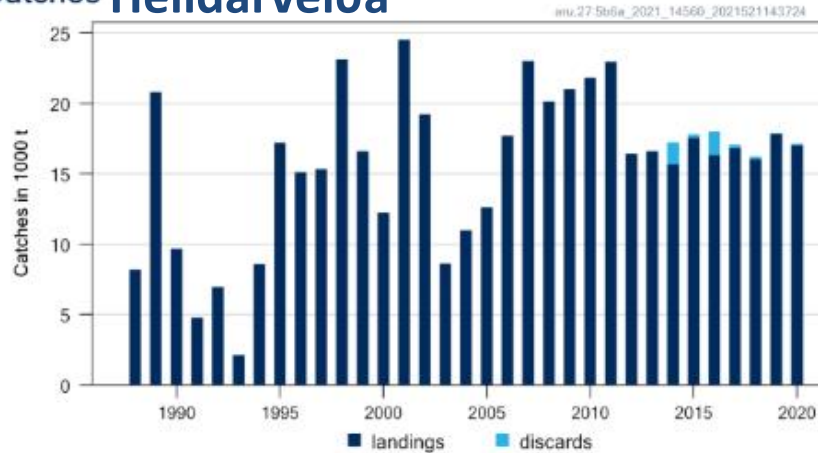


Gullaksur

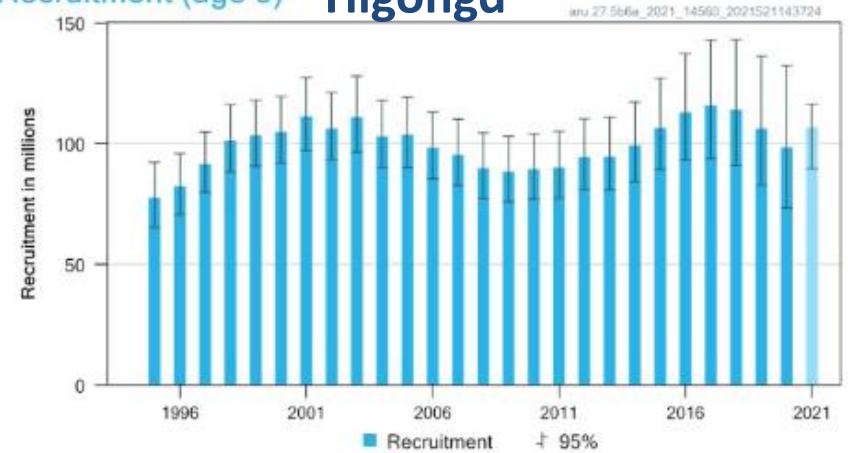


ICES tilmælir 24493 tons í 2022 fyri alt økið. Føroyar ca 70% av heildarveiðu.
Føroysk kvota í 2021: 11700 tons.

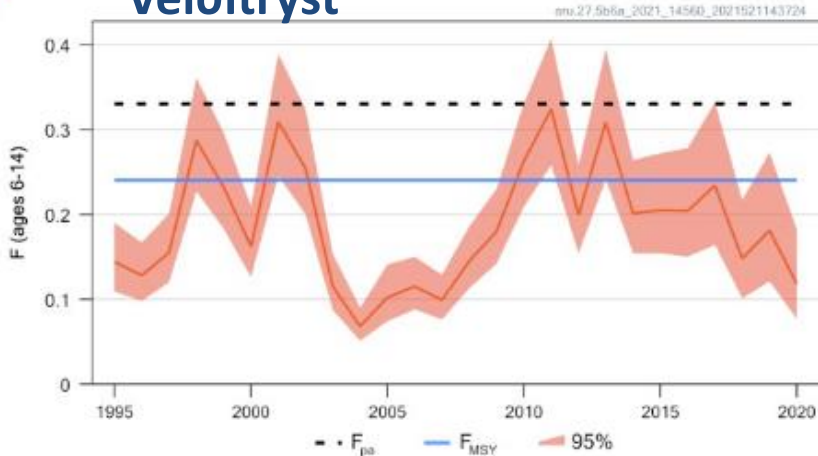
Catches Heildarveiða



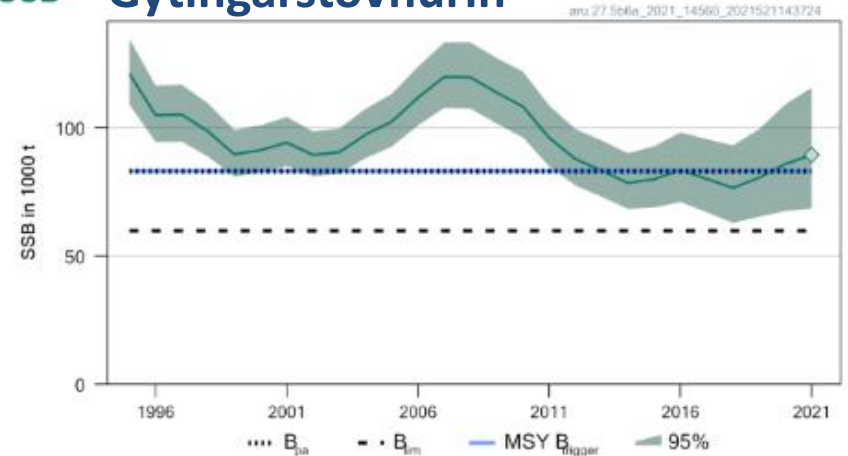
Recruitment (age 5) Tilgongd



F Veiðitrýst



SSB Gýtingarstovnurin



Stoðan og avbjóðingar

- Stoðan: Toskur ring, hýsa miðalgóð, longa góð, gulllaksur miðalgóð. Lívfrøðin og stovnsmetingin hjá upsa er óviss og fleiri kanningar mugu gerast.
- Avbjóðingar: At nøkta tørvin til MSC góðkenningar (t.d.stovnsmeta fleiri fiskasløg) krevur størri arbeiðsorku og tilhoyrandi fígging.
- Neyðugt er, at rannsóknarskipið hevur fígging til allar kanningarnar (oljuprísur nógv øktur).